



## Technical specifications and instructions



### **60 Frame Plunger pump**

**Standard brass model 6775**

**Stainless steel model 6771**

**Nickel aluminum bronze  
model 6777**

### Specifications (\*)

#### **Model 6775-6771-6777**

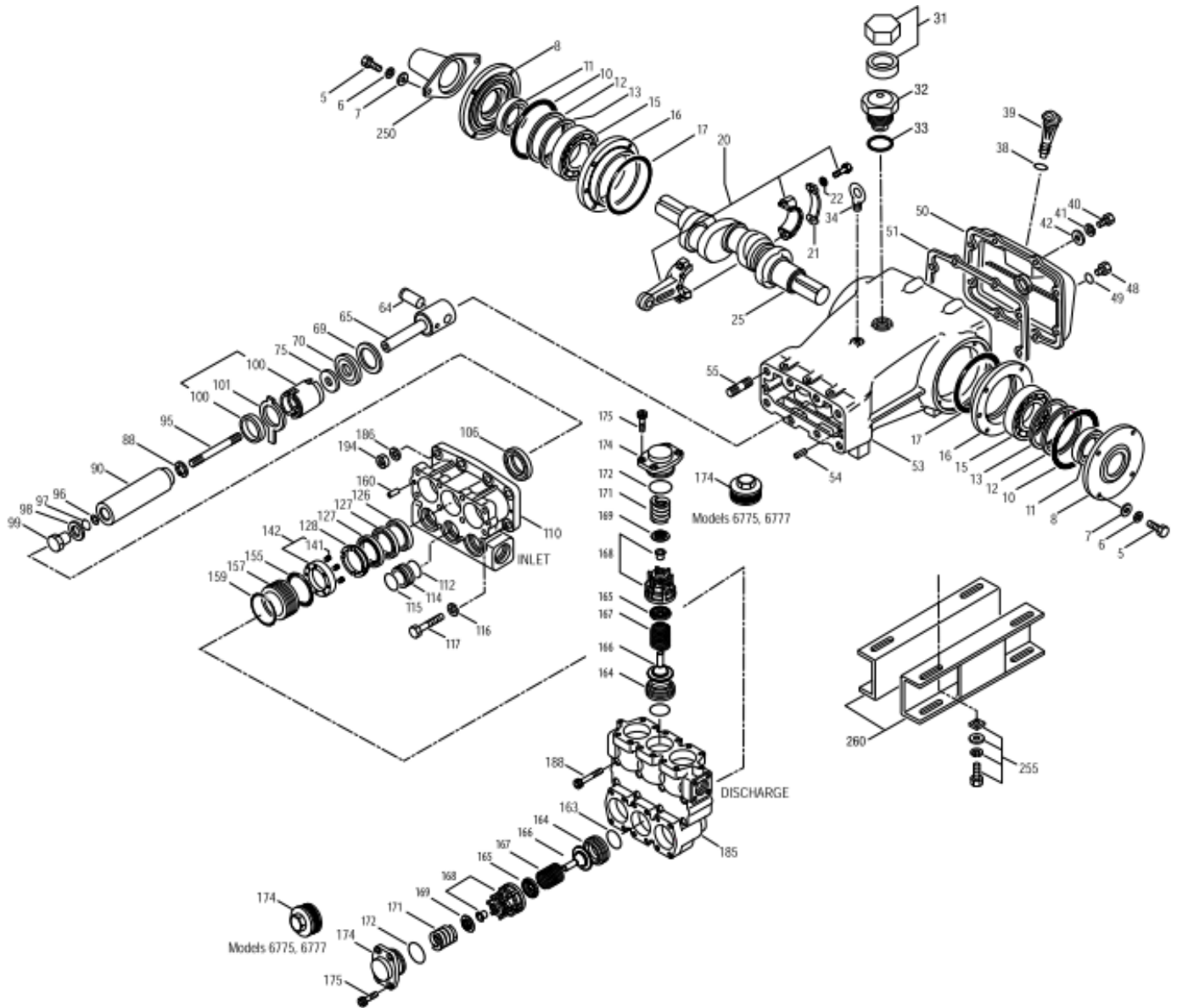
<b>Flow</b>	284 L/min
<b>Pressure range</b>	7 to 85 bar
<b>RPM</b>	650 RPM

### Common specifications

<b>Inlet pressure range</b>	Flooded to 3,5 bar
<b>Bore</b>	55 mm
<b>Stroke</b>	65,5 mm
<b>Crankcase capacity</b>	9,46 L
<b>Maximum liquid temperature</b>	60° C
<b>Inlet ports (2)</b>	2" NPTF
<b>Discharge ports (2)</b>	1-1/4" NPTF
<b>Shaft diameter</b>	45 mm
<b>Weight</b>	161 kg (6775) – 160 kg (6771) – 148 kg (6777)
<b>Dimensions (6775,6777)</b>	791 x 619 x 327 mm
<b>Dimensions (6771)</b>	780 x 619 x 316 mm

(\*) Abnormalities permitted only after consultation and written confirmation from Cat Pumps.

# Exploded View



# Parts list

lt.	Num.	Mat.	Num.	Mat.	Num.	Mat.	Description	Qt
	<b>6775</b>		<b>6771</b>		<b>6777</b>			
5	<b>126532</b>	<b>STCP R</b>	<b>89728</b>	<b>S</b>	<b>89728</b>	<b>S</b>	Screw, HH (M10x40)	8
6	<b>126231</b>	<b>STCP R</b>	<b>15847</b>	<b>S</b>	<b>15847</b>	<b>S</b>	Lockwasher (M10)	8
7	<b>126574</b>	<b>STCP R</b>	<b>19934</b>	<b>S</b>	<b>19934</b>	<b>S</b>	Washer, flat (M10)	8
8	29443	AL	29443	AL	29443	AL	Cover, bearing, outer	2
10	29444	NBR	29444	NBR	29444	NBR	O-ring outer, bearing cover – 70D	2
11	11443	NBR	11443	NBR	11443	NBR	Seal, oil, crankshaft – 70D	2
12	126594	STCP R	126594	STCP R	126594	STCP R	Washer, shim (M120 x 0.3)	0-2
13	126595	STCP R	126595	STCP R	126595	STCP R	Washer, shim (M120 x 0.5)	0-2
15	29441	STL	29441	STL	29441	STL	Bearing, roller	2
16	29442	STL	29442	STL	29442	STL	Cover, bearing, inner	2
17	29444	NBR	29444	NBR	29444	NBR	O-ring inner, bearing cover – 70D	2
20	126612	BBHS	126612	BBHS	126612	BBHS	Rod, connecting (incl.21,22)	3
21	126560	STCP R	126560	STCP R	126560	STCP R	Washer, locking	3
22	126593	STCP R	126593	STCP R	126593	STCP R	Washer, shim (M10.5 x 1.5)	6
25	29440	FCM	29440	FCM	29440	FCM	Crankshaft, dual end (65.5 mm)	1
31	828710	PE	828710	PE	828710	PE	Protector, oil cap w/foam gasket	1
32	43211	ABS	43211	ABS	43211	ABS	Cap, oil filler	1
33	14177	NBR	14177	NBR	14177	NBR	O-ring, oil filler cap – 70D	1
34	126743	STCP R	126743	STCP R	126743	STCP R	Bolt, eye (M12) (for lifting pump only)	1
38	129343	RBR	129343	RBR	129343	RBR	Gasket, flat	1
39	49948	ABS	49948	ABS	49948	ABS	Stick, dip	1
40	<b>126531</b>	<b>STCP R</b>	<b>89627</b>	<b>S</b>	<b>89627</b>	<b>S</b>	Screw, HH (M10x30)	8
41	<b>126231</b>	<b>STZP R</b>	<b>15847</b>	<b>S</b>	<b>15847</b>	<b>S</b>	Lockwasher (M10)	8
42	<b>126574</b>	<b>STCP R</b>	<b>19934</b>	<b>S</b>	<b>19934</b>	<b>S</b>	Washer, flat (M10)	8
48	25625	STCP	25625	STCP	25625	STCP	Plug, drain (1/4" x 19 BSP)	1
49	23170	NBR	23170	NBR	23170	NBR	O-ring, drain plug – 70D	1
50	29438	AL	29438	AL	29438	AL	Cover, rear	1
51	129386	NBR	129386	NBR	129386	NBR	Gasket, rear cover	1
53	45303	AL	45303	AL	45303	AL	Crankcase w/guide pins (incl. 34,54)	1
54	43282	S	43282	S	43282	S	Pin, guide	2
55	<b>126553</b>	<b>STCP R</b>	<b>89615</b>	<b>S</b>	<b>89615</b>	<b>S</b>	Stud (M16x70)	2
64	29481	CM	29481	CM	29481	CM	Pin, crosshead	3
65	+ 45384	SSZZ	45384	SSZZ	45384	SSZZ	Rod, plunger	3
69	126588	STCP R	126588	STCP R	126588	STCP R	Washer, oil seal	3
70	29454	NBR	29454	NBR	29454	NBR	Seal, oil – 80D	3
75	44752	NBR	44752	NBR	44752	NBR	Slinger, barrier – 85D	3
88	45677	SS	45677	SS	45677	SS	Washer, keyhole (M14)	3
90	44749	CC	44749	CC	44749	CC	Plunger (M55x185)	3
95	<b>89783</b>	<b>S</b>	<b>44748</b>	<b>SS</b>	<b>44748</b>	<b>SS</b>	Stud, plunger retainer (M14x147)	3
96	20214	PTFE	20214	PTFE	20214	PTFE	Back-up-ring, plunger retainer	3
97	17616	NBR	17616	NBR	17616	NBR	O-ring, plunger retainer – 80D	3
99	<b>45276</b>	<b>S</b>	<b>44750</b>	<b>SS</b>	<b>44750</b>	<b>SS</b>	Retainer, plunger (M14)	3
100	855000	PVDF	855000	PVDF	855000	PVDF	Retainer, seal, 2-pc (see TB 105)	3
101	44762	-	44762	-	44762	-	Wick, long tab (M55x185)	3
106	44757	NBR	44757	NBR	44757	NBR	Seal, LPS w/SS-spg	3
110	<b>49457</b>	<b>NABC</b>	<b>45769</b>	<b>SS</b>	<b>44754</b>	<b>NAB</b>	Manifold, inlet	1
112	18175	NBR	18175	NBR	18175	NBR	O-ring, spacer, inner – 80D	3
114	<b>44767</b>	<b>SS</b>	<b>44767</b>	<b>SS</b>	<b>48957</b>	<b>SSD</b>	Spacer, inlet manifold	3
115	18175	NBR	18175	NBR	18175	NBR	O-ring, spacer, outer – 80D	3
116	<b>126569</b>	<b>STCP R</b>	<b>19086</b>	<b>S</b>	<b>19086</b>	<b>S</b>	Lockwasher (M16)	4
117	<b>126537</b>	<b>STCP R</b>	<b>89729</b>	<b>S</b>	<b>89729</b>	<b>S</b>	Screw, HH (M16x55)	4
126	48392	D	48392	D	48392	D	Adapter, female (see TB 087)	3
	45771	SS	45771	SS	45771	SS	Adapter, female	3
127	44764	STG*	44764	STG*	44764	STG*	V-packing	6
128	45772	SS	45772	SS	45772	SS	Adapter, male	3
141	44943	SS	44943	SS	44943	SS	Coil spring, spacer	24
142	<b>48501</b>	<b>BB</b>	<b>45383</b>	<b>SS</b>	<b>45383</b>	<b>SS</b>	Spacer w/coil springs	3
155	18178	NBR	18178	NBR	18178	NBR	O-ring, spacer – 80D	3
157	45321	SS	45321	SS	45321	SS	Spacer, V-packing	3
159	18178	NBR	18178	NBR	18178	NBR	O-ring, spacer – 80D	3
160	44756	S	44756	S	44756	S	Pin, guide	2

163	18176	NBR	18176	NBR	18176	NBR	O-ring, seat – 80D	6
164	+ 44772	SS	44772	SS	44772	SS	Seat	6
165	76304	SS	76304	SS	76304	SS	Guide, spring	6
166	76319	SS	76319	SS	76319	SS	Valve, guided, quiet valve	6
167	76309	SS	76309	SS	76309	SS	Spring	6
168	76349	PVDF	76349	PVDF	76349	PVDF	Retainer, spring	6
169	76306	SS	76306	SS	76306	SS	Retainer, bushing	6
171	44780	SS	44780	SS	44780	SS	Spring, coil, valve plug	6
172	18177	NBR	18177	NBR	18177	NBR	O-ring, valve plug – 80D	6
174	<b>49461</b>	<b>NABC</b>	<b>48572</b>	<b>SS</b>	<b>44778</b>	<b>NAB</b>	Plug, valve {3/00}	1
175	-	-	<b>48573</b>	<b>S</b>	-	-	Screw, HSH (M16x35) {3/00}	24
185	<b>49459</b>	<b>NABC</b>	<b>48489</b>	<b>SS</b>	<b>44769</b>	<b>NAB</b>	Manifold, discharge {3/00}	1
186	<b>126569</b>	<b>STCP R</b>	<b>19086</b>	<b>S</b>	<b>19086</b>	<b>S</b>	Lockwasher (M16)	2
188	<b>126744</b>	<b>STCP R</b>	<b>89694</b>	<b>S</b>	<b>89694</b>	<b>S</b>	Screw, HSH (M16x110)	8
194	<b>126525</b>	<b>STCP R</b>	<b>81291</b>	<b>S</b>	<b>81291</b>	<b>S</b>	Nut, hex (M16)	2
250	29445	AL	29445	AL	29445	AL	Protector, shaft	1
255	33243	STZP	33243	STZP	33243	STZP	Kit, mount (included w/pump)	1
260	126604	STZP	126604	STZP	126604	STZP	Rail (included w/pump)	2
275	990014	STL	990014	STL	990014	STL	Hub 45mm (M14x9 keyway)	1
279	30429	STZP	30429	STZP	30429	STZP	Oiler (10 oz.)	3
283	34314	-	34314	-	34314	-	Kit, oil drain(3/8"x48")	1
299	<b>996760</b>	<b>BBCP</b>	<b>996667</b>	<b>SS</b>	<b>994820</b>	<b>NAB</b>	Head, complete	1
300	34091	NBR*	34091	NBR*	34091	NBR*	Kit, seal (97,106,112,115,127,155,159) <b>standard</b>	1
	34093	FPM*	34093	FPM*	34093	FPM*	Kit, seal (97,106,112,115,127,155,159)	1
	# 76091	EPDM	# 76091	EPDM	# 76091	EPDM	Kit, seal (97,106,112,115,127,155,159)	1
310	76140	NBR	76140	NBR	76140	NBR	Kit, valve (163,164,165,166,167,168,169,172) <b>standard</b>	2
	76145	FPM	76145	FPM	76145	FPM	Kit, valve (163,164,165,166,167,168,169,172)	2
	# 76240	EPDM	# 76240	EPDM	# 76240	EPDM	Kit, valve (163,164,165,166,167,168,169,172)	2
-	819010	F	819010	F	819010	F	Assy, crankcase, cast iron conversion	1
-	88902	STZP	88902	STZP	88902	STZP	Stud (M16x277) (removing DM, IM)	2

**Bold print part numbers are unique to a particular pump model. Italics are optional items. { }** Date of latest production change.  
+ Production parts are different from replacement parts. R Components comply with RoHS directive. \* Review material codes for individual items. (STG generally may be used as alternate). # Silicone oil/grease required. See 'Tech Bulletins' 003, 024, 036, 043, 052, 053, 054, 064, 074, 077, 083, 084, 087, 095 and 105 for additional information.

Material codes: (not part or part number)

ABS	ABS plastic	FCM	Forged chrome-moly	S	304 SS
AL	Aluminum	FPM	Fluorocarbon	SFTB	Special Blend PTFE Black
BB	Brass	NAB	Nickel aluminum bronze	SS	316 SS
BBHS	Brass / high strength	NABC	Nickel aluminum bronze chrome pl.	SSZZ	316 SS / zamak
CC	Ceramic	NBR	Medium nitrile (Buna-N)	STCP	Steel / chrome plated
CM	Chrome-moly	PE	Polyethylene (Buna-N)	STG	Special blend PTFE white
D	Acetal	PTFE	Pure polytetrafluoroethylene	STL	Steel
EPDM	Ethylene Propylene Diene Monam.	PVDF	Polyvinylidene fluoride	STZP	Steel / zinc plated
F	Cast iron	RBR	Rubber Fluoride		