



Technical specifications and instructions



68 Frame Block-Style Stainless Steel Plunger pump

Standard model 6821

Flushed model 6821K

Specifications (*)

Model 6821-6821K

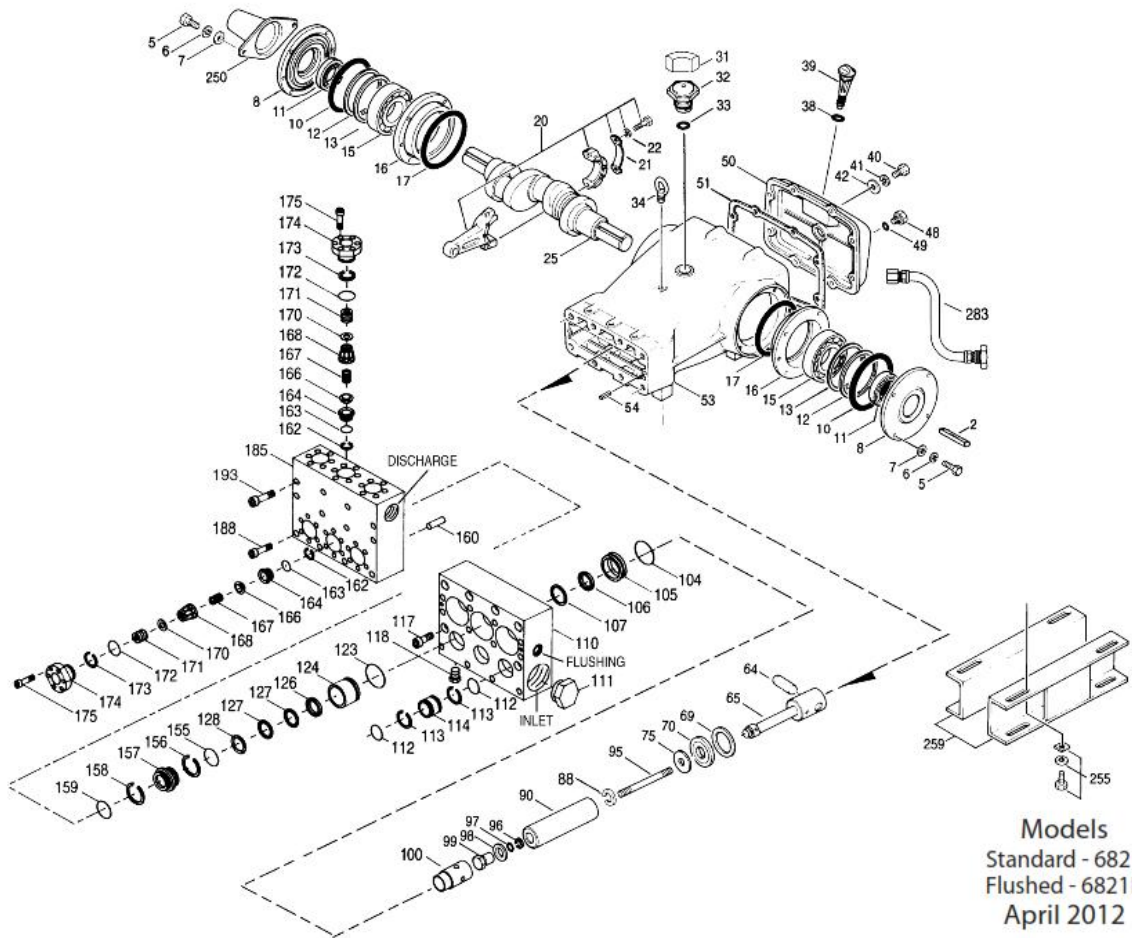
Flow 95 l/min
Pressure range 7 to 210 bar
RPM 615 RPM

Common specifications

Inlet pressure range	Flooded to 3,5 bar
Bore	32 mm
Stroke	65,5 mm
Crankcase capacity	9,46 L
Maximum liquid temperature	60° C
Inlet ports (2)	1-1/2" NPTF
Flushing ports (2)	1/2" NPTF
Discharge ports (2)	1" NPTF
Shaft diameter	45 mm
Weight	161 kg
Dimensions	750 x 618 x 305 mm

(*) Abnormalities permitted only after consultation and written confirmation from Cat Pumps.

Exploded View



Parts list

Item	Num. 6821	Mat.	Num. 6821K	Mat.	Description	Qty
2	43048	STL	43048	STL	Key (M14x9x90)	1
5	89728	S	89728	S	Screw, HH (M10x40)	8
6	15847	S	15847	S	Lockwasher (M10)	8
7	19934	S	19934	S	Washer, flat (M10)	8
8	29443	AL	29443	AL	Cover, bearing – outer	2
10	29444	NBR	29444	NBR	O-ring, bearing cover – 70D	2
11	11443	NBR	11443	NBR	Seal, oil, crankshaft – 70D	2
12	43642	STZP	43642	STZP	Washer, shim (M120x0,3)	0-2
	126594	STCP R	126594	STCP R	Washer, shim (M120x0,3)	0-2
13	126595	STCP R	126595	STCP R	Washer, shim (M120x0,5)	0-2
15	29441	STL	29441	STL	Bearing, roller	2
16	29442	STL	29442	STL	Cover, bearing – inner	2
17	29444	NBR	29444	NBR	O-ring, bearing cover – 70D	2
20	126612	BBHS	126612	BBHS	Assembly, connecting rod (incls 21,22)	3
21	126560	STCP R	126560	STCP R	Washer, locking	3
22	126593	STCP R	126593	STCP R	Washer, shim (M10,5x1,5)	6
25	29440	FCM	29440	FCM	Crankshaft, dual end	1
31	828710	-	828710	-	Protector, oil cap w/foam gasket	1
32	43211	ABS	43211	ABS	Cap, oil filler	1
33	14177	NBR	14177	NBR	O-ring, filler cap – 70D	1
34	126743	STCP R	126743	STCP R	Bolt, eye (M12) (for lifting pump only)	1
38	129343	RBR	129343	RBR	Gasket, flat flex	1
39	27769	ABS	27769	ABS	Stick, dip	1
40	89627	S	89627	S	Screw, HH (M10x30)	8
41	15847	S	15847	S	Lockwasher (M10)	8
42	19934	S	19934	S	Washer, flat (M10)	8
48	25625	STCP	25625	STCP	Plug, drain (1/4" x 19 BSP)	1
49	23170	NBR	23170	NBR	O-ring, drain plug – 70D	1
50	29438	AL	29438	AL	Cover, rear	1
51	129386	NBR	129386	NBR	Gasket, rear cover	1
53	45303	AL	45303	AL	Crankcase (incl 34,54)	1
54	43282	S	43282	S	Pin, guide	2
64	29481	CM	29481	CM	Pin, crosshead	3
65	48735	SSZZ	48735	SSZZ	Rod, plunger	3
69	126588	STCP R	126588	STCP R	Washer, oil seal	3
70	29454	NBR	29454	NBR	Seal, oil, crankcase – 80D	3
75	43865	S	43865	S	Slinger, barrier	3
88	45676	S	45676	S	Washer, keyhole (M16)	3
90	43957	CC	43957	CC	Plunger (M32x145)	3
95	89778	SS	89778	SS	Stud, plunger retainer (M10x135)	3
96	20189	PTFE	20189	PTFE	Back-up-ring, plunger retainer	3
97	11345	NBR	11345	NBR	O-ring, plunger retainer – 70D	3
	11375	FPM	11375	FPM	O-ring, plunger retainer	3
	# 701490	EPDM	# 701490	EPDM	O-ring, plunger retainer	3
98	44085	SS	44085	SS	Gasket, plunger retainer	3
99	44084	SS	44084	SS	Retainer, plunger (M10)	3
100	703084	D	703084	D	Retainer, seal	3
104	43875	NBR	43875	NBR	O-ring, adapter, inlet – 70D	3
	44826	FPM	44826	FPM	O-ring, adapter, inlet – 70D	3
	# 701656	EPDM	# 701656	EPDM	O-ring, adapter, inlet – 70D	3
105	45562	SS	45562	SS	Adapter, inlet, LPS	3
106	44098	NBR	44098	NBR	Seal, LPS w/SS-Spg	3
	44827	FPM	44827	FPM	Seal, LPS w/SS-Spg	3
	# 48244	EPDM	# 48244	EPDM	Seal, LPS w/SS-Spg	3
107	44101	SS	44101	SS	Washer, LPS	3
110	701321	SS	-	-	Manifold, inlet, block-style	1
	-	-	701322	SS	Manifold, inlet, block-style, flushed	1
111	701116	SS	701116	SS	Plug, inlet manifold (1-1/2" NPTM)	1
112	701632	NBR	701632	NBR	O-ring, spacer	6
	701328	FPM	701328	FPM	O-ring, spacer	6
	# 701973	EPDM	# 701973	EPDM	O-ring, spacer	6
113	701329	PTFE	701329	PTFE	Back-up-ring, spacer	6
114	701327	SS	701327	SS	Spacer, inlet	3
117	89694	S	89694	S	Screw HSH (M16x110)	6
118	701077	SS	-	-	Plug (1/4" NPTM)	3
123	12391	NBR	12391	NBR	O-ring, V-packing cylinder – 70D	3
	13266	FPM	13266	FPM	O-ring, V-packing cylinder – 70D	3
	# 701657	EPDM	# 701657	EPDM	O-ring, V-packing cylinder – 70D	3

124	701330	SS	701330	SS	Cylinder, V-packing	3
126	45564	SS	45564	SS	Adapter, female	3
	48390	D	48390	D	Adapter, female	3
127	44608	STG*	44608	STG*	V-packing	6
128	704477	SS	704477	SS	Adapter, male	3
155	48861	NBR	48861	NBR	O-ring, V-packing spacer, inner – 90D	3
	11748	FPM	11748	FPM	O-ring, V-packing spacer, inner – 70D	3
	# 701749	EPDM	# 701749	EPDM	O-ring, V-packing spacer, inner – 70D	3
156	48371	D	48371	D	Back-up-ring, spacer, inner	3
157	45674	SS	45674	SS	Spacer, V-packing	3
158	48362	D	48362	D	Back-up-ring, spacer, outer	3
159	48860	NBR	48860	NBR	O-ring, V-packing spacer, outer – 90D	3
	20137	FPM	20137	FPM	O-ring, V-packing spacer, outer – 70D	3
	# 701492	EPDM	# 701492	EPDM	O-ring, V-packing spacer, outer	3
160	44756	S	44756	S	Pin, guide	2
162	21985	PTFE	21985	PTFE	Back-up-ring, seat	12/6
163	26089	NBR	26089	NBR	O-ring, seat – 80D	12/6
	11377	FPM	11377	FPM	O-ring, seat – 80D	12/6
	# 46647	EPDM	# 46647	EPDM	O-ring, seat – 80D	12/6
164	44080	SS	44080	SS	Seat	6
166	44081	SS	44081	SS	Valve	6
167	44082	SS	44082	SS	Spring	6
168	44735	PVDF	44735	PVDF	Retainer, spring	6
170	44794	SS	44794	SS	Washer, retainer	6
171	44793	SS	44793	SS	Spring, coil	6
172	15853	NBR	15853	NBR	O-ring, valve plug – 70D	6
	11720	FPM	11720	FPM	O-ring, valve plug – 70D	6
	# 701481	EPDM	# 701481	EPDM	O-ring, valve plug – 70D	6
173	20224	PTFE	20224	PTFE	Back-up-ring, valve plug	6
174	701260	SS	701260	SS	Plug, valve	6
175	87951	S	87951	S	Screw, HSH (M10x30)	36
185	701320	SS	701320	SS	Manifold, discharge, block-style	1
188	701279	S	701279	S	Screw, HSH (M12x100), lower	4
193	89694	S	89694	S	Screw, HSH (M16x110), upper	8
250	29445	AL	29445	AL	Protector, shaft	1
255	33243	STZP	33243	STZP	Kit, mount (included w/pump)	2
259	29477	STZP	29477	STZP	Rail, box (included w/pump)	2
275	990014	STL	990014	STL	Hub, "B" M45 w/keyway) (see TB 003)	1
283	34314	-	34314	-	Kit, oil drain	1
299	910001	SS	-	-	Head, complete, block-style	1
	-	-	910002	SS	Head, complete, block-style, flushed	1
300	701649	NBR*	701649	NBR*	Kit, seal (incl. 97,104,106,112,113,123,127,155,156,158,159)	1
	33720	FPM*	33720	FPM*	Kit, seal (incl. 97,104,106,112,113,123,127,155,156,158,159)	1
	# 702352	EPDM	# 702352	EPDM	Kit, seal (incl. 97,104,106,112,113,123,127,155,156,158,159)	1
310	34151	NBR	34151	NBR	Kit, valve (incl. 162,163,164,166,167,168,170,172,173)	2
	701798	FPM	701798	FPM	Kit, valve (incl. 162,163,164,166,167,168,170,172,173)	2
	# 701799	EPDM	# 701799	EPDM	Kit, valve (incl. 162,163,164,166,167,168,170,172,173)	2
-	819010	F	819010	F	Assembly, crankcase, cast iron conversion	1
370	-	-	990663	-	Assembly, flushing, 19L, 115V, 1.1 Amp, 1/2"NPT	1
390	714500	SS	714500	SS	C.A.T. (Captive Acceleration Tube)	1
391	714506	SS	714506	SS	Adapter (2 per C.A.T.)	2
392	701828	SS	701828	SS	Elbow assy used with adapter 714506	1

Bold print part numbers are unique to a particular pump model. Italics are optional items. # silicone oil/grease required. R Components comply with RoHS directive. * Review material codes for individual items (STG generally may be used as alternate).

See 'Tech Bulletins' 003, 024, 036, 074, 077, 083, 084, 087, 095 and 105 for additional information.

C.A.T. highly recommended for pressurized inlet, R.O. and industrial applications.

Material codes: (not part or part number)

ABS	ABS plastic	F	Cast iron	S	304 stainless steel
AL	Aluminum	FCM	Forged chrome-moly	SS	316 stainless steel
BBHS	Brass / high strength	FPM	Fluorocarbon	SSZZ	316SS / zamak
CC	Ceramic	NBR	Medium nitrile (Buna-N)	STCP	Steel/chrome plated
CM	Chrome-moly	PTFE	Pure polytetrafluoroethylene	STG	Special blend PTFE white
D	Acetal	PVDF	Polyvinylidene fluoride	STL	Steel
EPDM	Ethylene propylene diene mon.	RBR	Rubber	STZP	Steel / zinc plated