



Technical specifications and instructions



Stainless Steel Direct drive plunger pump

Models

2SFQ25SEEL

2SFQ29SEEL

2SFQ35SEEL

2SFQ42SEEL

Specifications (*)

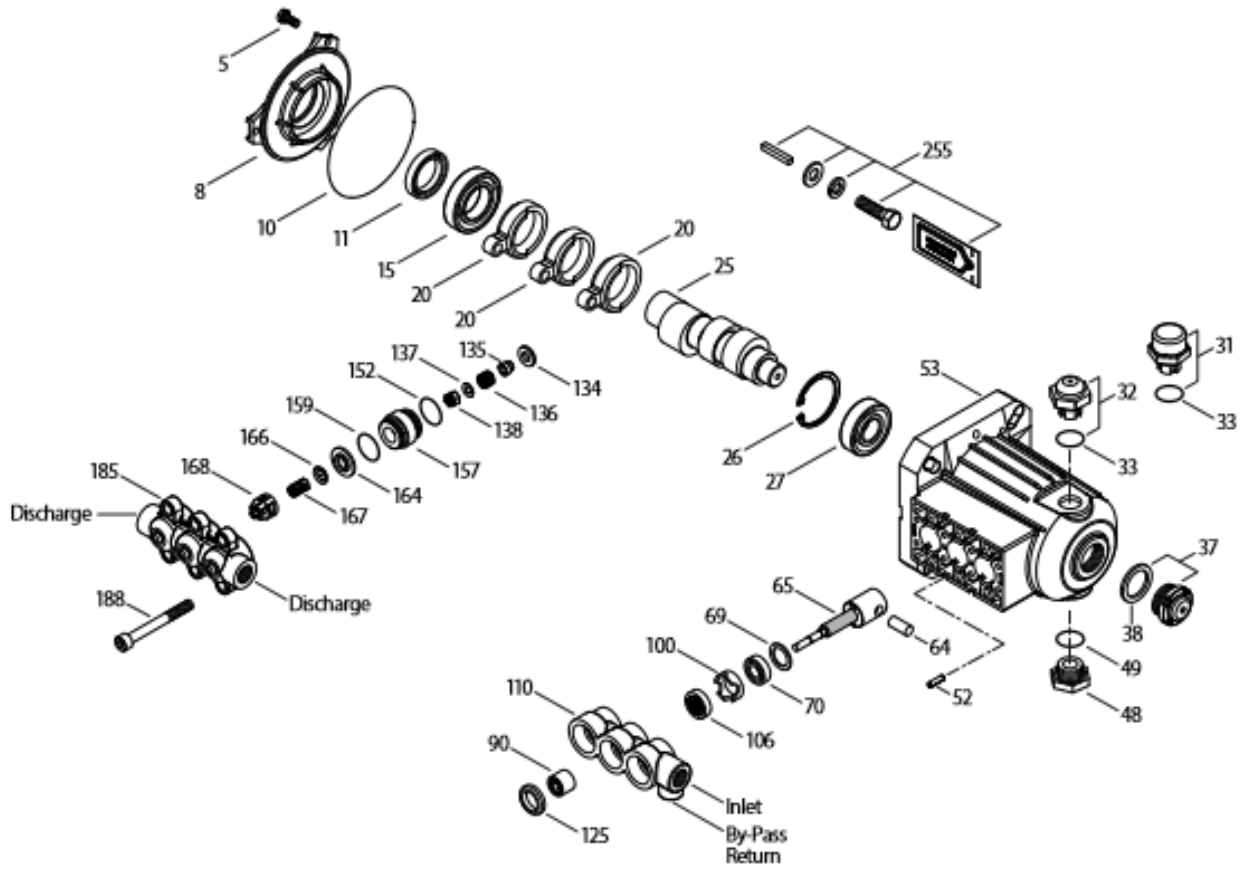
	2SFQ25SEEL	2SFQ29SEEL	2SFQ35SEEL	2SFQ42SEEL
Flow	7,9 l/min	9,1 l/min	11,0 l/min	13,4 l/min
Discharge pressure range	6,9 - 83 bar	6,9 - 83 bar	6,9 - 83 bar	6,9 - 83 bar
Stroke	7,3 mm	8,5 mm	10,2 mm	10,2 mm

Common Specifications

RPM	1450
Inlet pressure range	flooded to 4.1 bar
Shaft diameter	15,9 mm
Bore	18 mm
Bore (2SF42SEEL only)	20 mm
Maximum liquid temperature	71° C
Crankcase capacity	0,30 L
Inlet port (1)	3/8" NPT(F)
Discharge ports (2)	3/8" NPT(F)
By-pass return port (1)	1/4" NPT(F)
Weight (pump only)	4 kg
Dimensions (pump only)	173 x 221 x 133 mm

(*) Abnormalities permitted only after consultation and written confirmation from Cat Pumps.

Exploded View



Models
2SFQ25SEEL, 2SFQ29SEEL,
2SFQ35SEEL, 2SFQ42SEEL
September 2018

Parts list

Item	Num.	Mat.	Description	Models	Qty
5	547445	S	Screw, HHS sems (M6x14)	All Models	3
8	547153	AL	Cover, bearing	All Models	1
10	14041	NBR	O-ring, bearing cover – 70D	All Models	1
11	55337	NBR	Seal, oil, crankshaft	All Models	1
15	14488	STL	Bearing, ball, inner	All Models	1
20	547046	TNM	Rod, Connecting	All Models	1
25	544693	CM	Crankshaft, 7.3 mm	2SFQ25SEEL	1
	45914	CM	Crankshaft, 8.5 mm	2SFQ29SEEL	1
	544694	CM	Crankshaft, 10.2 mm	2SFQ35SEEL, 2SFQ42SEEL	1
26	12385	STL	Ring, retaining, bearing	All Models	1
27	15710	STL	Bearing, ball, outer	All Models	1
31	549726	-	Cap, vented w/O-ring (rain cap)	All Models	1
32	547961	RTP	Cap, oil filler w/O-ring	All Models	1
33	14179	NBR	O-ring, oil filler cap – 70D	All Models	1
37	92241	-	Gauge, oil w/gasket – 80D	All Models	1
38	44428	NBR	Gasket, flat, oil gauge – 80D	All Models	1
48	44842	NY	Plug, drain	All Models	1
49	14179	NBR	O-ring, drain plug – 70D	All Models	1
52	833820	SSSS	Pin, guide	All Models	2
53	833819	AL	Crankcase	All Models	1
64	16948	CM	Pin, crosshead	All Models	3
65	834203	SSTO	Rod, plunger	All Models	3
69	126259	STCP R	Washer, oil seal	All Models	3
70	25461	NBR	Seal, oil crankcase	All Models	3
90	544697	CC	Plunger, ceramic (M18x18)	2SFQ25SEEL-2SFQ35SEEL	3
	831290	CC	Plunger, ceramic (M20x18)	2SFQ42SEEL	3
100	44869	PVDF	Retainer, seal	All Models	3
106	547683	NBR	Seal, LPS w/SS-Spg	All Models	3
	545192	FPM	Seal, LPS w/SS-Spg	All Models	3
	# 546507	EPDM	Seal, LPS w/SS-Spg	All Models	3
	76443	ST	Seal, LPS	All Models	3
110	833996	SS	Manifold, inlet	SFQ25SEEL,-2SFQ35SEEL	1
	833822	SS	Manifold, inlet	SFQ42SEEL	1
125	833997	SNG	Seal, HPS	2SFQ25SEEL-2SFQ35SEEL	3
	833824	SNG	Seal, HPS	2SFQ42SEEL	3
134	33873	D	Valve, inlet	2SFQ25SEEL-2SFQ35SEEL	3
	833821	D	Valve, inlet	2SFQ42SEEL	3
135	543689	SS	Spacer	All Models	3
136	543690	SS	Spring, inlet valve	All Models	3
137	88575	S	Washer, conical (M6)	All Models	3
138	543692	SS	Nut (M6)	All Models	3
152	23172	NBR	O-ring, adapter spacer, inner – 70D	2SFQ25SEEL-2SFQ35SEEL	3
	549539	NBR	O-ring, adapter spacer, inner – 70D	2SFQ42SEEL	3
157	544700	SS	Adapter, valve	2SFQ25SEEL-2SFQ35SEEL	3
	831289	SS	Adapter, valve	2SFQ42SEEL	3
159	23172	NBR	O-ring, adapter spacer, outer – 70D	All Models	3
164	544293	SS	Seat	All Models	3
166	833825	D	Valve	All Models	3
167	543700	SS	Spring	All Models	3
168	44565	PVDF	Retainer, spring	All Models	3
185	547705	SS	Manifold, discharge	All Models	1
188	544701	S	Screw, HSH (M8x80)	All Models	6
255	30517	STZP R	Assy, bolt mount	All Models	1
285	80228	STL	Screw (M8-1.25x80)	All models	2
300	76273	NBR	Kit, seal (incl.106,125,152,159)	2SFQ25SEEL-2SFQ35SEEL	1

	76265	NBR	<i>Kit, seal (incl.106,125,152,159)</i>	2SFQ42SEEL	1
310	76282	NBR	<i>Kit, valve (incl.152,159,164,166,167,168)</i>	2SFQ25SEEL-2SFQ35SEEL	1
	76274	NBR	<i>Kit, valve (incl.152,159,164,166,167,168)</i>	2SFQ42SEEL	1
311	34974	NBR	<i>Kit, inlet valve (incl.134-138,152,159)</i>	2SFQ25SEEL-2SFQ35SEEL	1
	76278	NBR	<i>Kit, inlet valve (incl.134-138,152,159)</i>	2SFQ42SEEL	1
352	44050	STZP R	<i>Tool, oil gauge removal</i>	All models	1

Bold print part numbers are unique to a particular pump model. Italics are optional items. # Silicone oil/grease required. { } Date of latest production change. + Production parts are different than repair parts. R Components comply with RoHS directive. * Review individual parts in each kit for material code identification.

View 'Tech Bulletins' 002, 036, 043, 055, 064, 070, 073, 074, 091, 092, 095, 122 and 124 for additional information.

Note: Discard key that may come standard with most motors and engines and use only the key included in bolt kit.

Material codes: (not part or part number)

AL	Aluminum	NBR	Medium nitrile (Buna-N)	SSSS	440 Stainless steel
CC	Ceramic	NY	Nylon	SSTO	316 SS / Titanium oxide
CM	Chrome-moly	PVDF	Polyvinylidene fluoride	STCP	Steel / chrome plated
D	Acetal	RTP	Reinforced composite	STL	Steel
EPDM	Ethylene propylene diene mon.	S	304 stainless steel	STZP	Steel / zinc plated
FPM	Fluorocarbon	SNG	Special blend (buna)	TNM	Special high strength
		SS	316 stainless steel		