



## Technical specifications and instructions



### **15 Frame Plunger pump**

**Standard model**

**1050**

#### Specifications (\*)

##### **Model 1050**

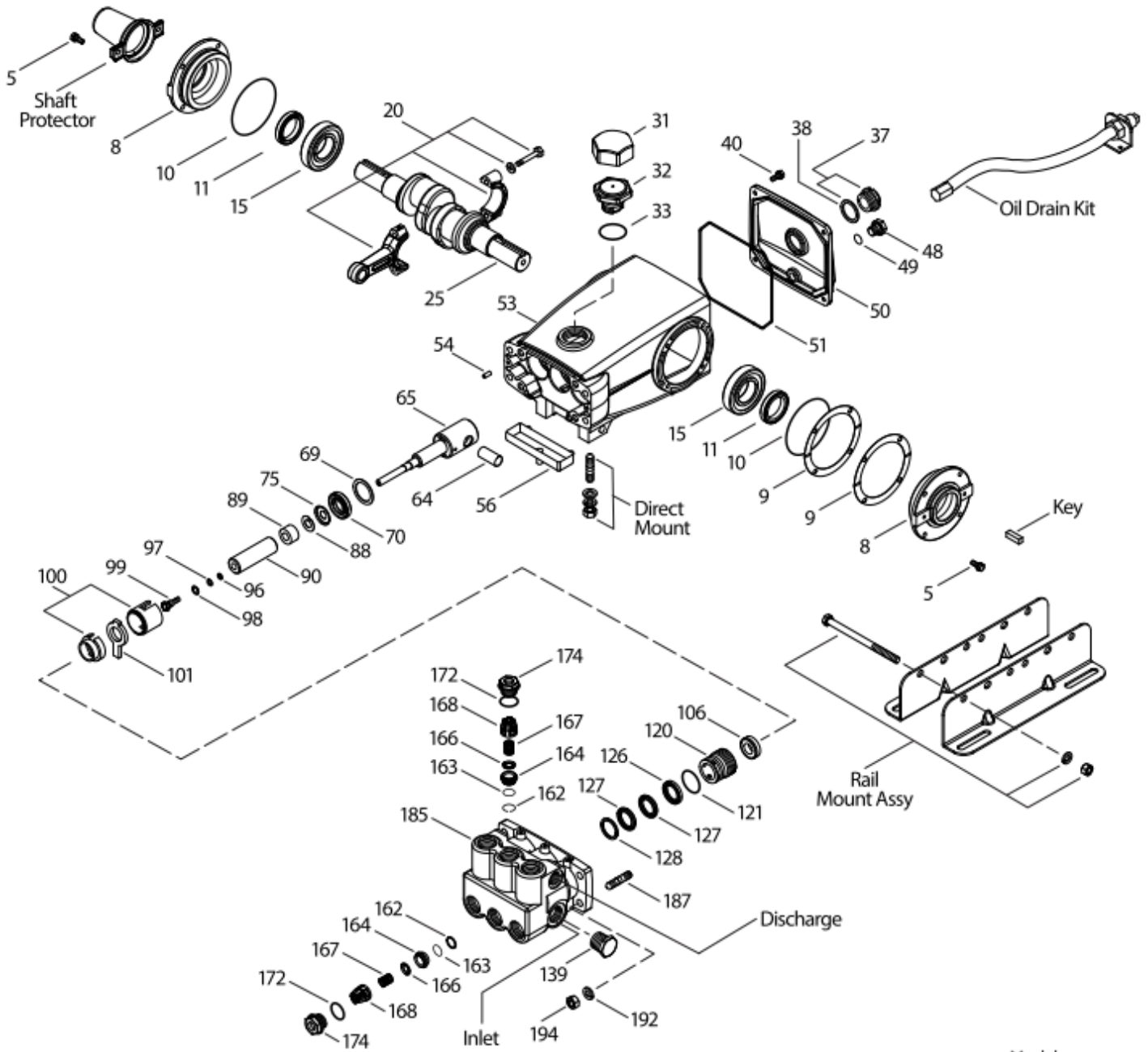
<b>Flow</b>	39,5 L/min
<b>Pressure range</b>	7 to 150 bar
<b>RPM</b>	1000 RPM
<b>Inlet pressure range</b>	- 0,35 to 4 bar
<b>Stroke</b>	30 mm

#### Common specifications

<b>Bore</b>	24 mm
<b>Crankcase capacity</b>	1,26 L
<b>Maximum liquid temperature</b>	70° C
<b>Inlet ports (2)</b>	3/4" NPTF
<b>Discharge ports (2)</b>	1/2" NPTF
<b>Shaft diameter</b>	30 mm
<b>Weight</b>	20 kg
<b>Dimensions</b>	414 x 330 x 164 mm

(\*) Abnormalities permitted only after consultation and written confirmation from Cat Pumps.

# Exploded View



Model  
Standard - 1050  
December 2015

# Parts list

It.	Num.	Mat.	Description	Qt
	<b>1050</b>			
5	125824	STCP R	Screw, sems HHC (M6x16)	8
8	43496	AL	Cover, bearing	2
9	815281	FBR	Split shim, bearing cover, 2 pc	2/4
	814800	S	Split shim, bearing cover, 2 pc	0/4
10	11340	NBR	O-ring, bearing case – 70D	2
11	43495	NBR	Seal, oil, crankshaft – 70D	2
15	39060	STL	Bearing, roller	2
20	48600	TNM	Rod, connecting assembly {10/01}	3
25	43494	FCM	Crankshaft, dual end	1
31	828710	PE	Protector, oil cap w/foam gasket	1
32	43211	ABS	Cap, oil filler	1
33	14177	NBR	O-ring, filler cap – 70D	1
37	92241	-	Gauge, oil, bubble w/gasket – 80D	1
38	44428	NBR	Gasket, flat, oil gauge – 80D	1
40	126541	STCP R	Screw, sems HHC (M6x20)	4
48	25625	STCP	Plug, drain (1/4" x 19 BSP)	1
49	23170	NBR	O-ring, drain plug – 70D	1
50	43491	AL	Cover, rear	1
51	44834	NBR	O-ring, rear cover – 70D	1
53	115471	AL	Crankcase w/guide pins	1
54	27488	S	Pin, guide	2
56	44664	POP	Pan, oil	1
64	43507	CM	Pin, crosshead	3
65	43501	SZZ	Rod, plunger	3
69	126592	STCP R	Washer, oil seal	3
70	43500	NBR	Seal, oil, crankcase – 80D	3
75	43506	S	Slinger, barrier	3
88	45675	S	Washer, keyhole	3
89	43553	BB	Collar, spacer	3
90	43552	CC	Plunger (M24x77)	3
96	43235	PTFE	Back-up-ring, plunger retainer	3
97	17399	NBR	O-ring, plunger retainer – 80D	3
98	44041	SS	Gasket, plunger retainer	3
99	104360	S	Retainer, plunger (M6)	3
100	855001	POP	Retainer, seal, 2 pc {07/05} (see TB 098)	3
101	43554	-	Wick, long tab	3
106	44035	NBR	Seal, LPS w/SS-Spg	3
120	49290	BB	Case, seal {07/05}	3
121	14762	NBR	O-ring, seal case – 70D	3
126	43558	BB	Adapter, female	3
127	43559	SNG	V-packing	6
128	43560	BB	Adapter, male	3
139	20326	BBCP	Plug, inlet (3/4" NPTF)	1
162	43248	PTFE	Back-up-ring, valve seat	6
163	43249	NBR	O-ring, seat – 80D	6
164	44718	S	Seat	6
166	43721	S	Valve	6
167	43751	S	Spring, valve	6
168	44564	PVDF	Retainer, spring	6
172	17617	NBR	O-ring, valve plug – 90D	6
174	43851	BBCP	Plug, valve	6
185	46704	BBCP	Head, manifold {09/00}	1
187	126545	STCP R	Stud, manifold (M10x45)	4
192	126231	STCP R	Lockwasher (M10)	4
194	126522	STCP R	Nut, hex (M10)	4

*Italics are optional items.* { } Date of latest production change. R components comply with RoHS directive.

See 'Tech Bulletins' 002, 003, 024, 027, 035, 036, 043, 045, 046, 048, 049, 052, 053, 072, 074, 077, 083, 087, 089 and 098 for additional information.

Material codes: (not part or part number)

ABS	ABS plastic	NBR	Medium nitrile (Buna-N)	STCP	Steel / chrome plated
AL	Aluminium	PE	Polyethylene	STL	Steel
BB	Brass	POP	Polypropylene	STZP	Steel / zinc plated
BBCP	Brass/chrome plated	PTFE	Pure polytetrafluorethylene	SZZ	304 SS / zamak
CC	Ceramic	PVDF	Polyvinylidene fluoride	TNM	Special high strength
CM	Chrome-moly	S	304SS		
FBR	Fiber	SNG	Special blend Buna		
FCM	Forged chrome-moly	SS	316SS		

### **OPTIONAL PARTS & ACCESSORIES**

<b>PART</b>	<b>DESCRIPTION</b>	<b>QTY</b>
30764	Protector, shaft w/2 screws	1
30764S	Protector, shaft w/2 SS screws	1
30264	Mount, direct	1
30613	Mount, rail, assy (2.09 x 9.45)	1
30059	Hub, "H" 30 mm (M8 keyway)	1
30661	Mount, assy (inclcs 30613,30206,30059,30067,30764)	1
34334	Kit, oil drain (3/8" x 24") (see individual sheet)	1

### **SERVICE PARTS**

<b>PART</b>	<b>DESCRIPTION</b>	<b>QTY</b>
30696	Pliers, reverse	1
33006	Socket, seal case (1/2" drive)	1
30067	Key (M8 x 7.5 x 25)	1
814560	Head, complete w/NBR seals & O-rings	1

### **SEAL KITS**

<b>Pump model</b>	<b>NBR (standard)</b>	<b>FPM (0.0110)</b>	<b>EPDM (0.0220)</b>	<b>IPFE (0.0770)</b>	<b>HTST (0.3400)</b>		
1050	30913	30986	33913	76913	76062		
<b>Items incl.</b>						<b>Description</b>	<b>Qty</b>
97	17399	14160	46204	701715	17399	O-ring, plunger retainer	3
100	855001	855001	855001	855001	855001	Retainer, seal 2-piece	3
106	44035	44388	46208	703243	76035	Seal, LPS w/SS-spg	3
121	14762	11737	46205	701851	14762	O-ring, seal case	3
127	43559	103692	103692	103692	103692	V-packing	6

*Note: 1 seal kit required per pump*

### **VALVE KITS**

<b>Pump model</b>	<b>NBR (standard)</b>	<b>FPM (0.0110)</b>	<b>EPDM (0.0220)</b>	<b>IPFE (0.0770)</b>	<b>HTST (0.3400)</b>		
1050	34920	31256	31253	NSU	34920		
<b>Items incl.</b>						<b>Description</b>	<b>Qty</b>
162	43248	43248	43248	43248	43248	Backup-ring, seat	3
163	43249	44383	46206	701852	43249	O-ring, seat	3
164	44718	44718	44718	44718	44718	Seat (1050)	3
166	43721	43721	43721	43721	43721	Valve (1050)	3
167	43751	43751	43751	43751	43751	Spring (1050)	3
168	44564	44564	44564	44564	44564	Retainer, spring	3
172	17617	11691	46207	701853	17617	O-ring, valve plug	3

*Note: 2 valve kits required per pump*