



## Technical specifications and instructions



### **15 Frame Plunger pump**

<b>Stainless steel</b>	<b>1051</b>
<b>SS flushed</b>	<b>1051C</b>
<b>Duplex SS</b>	<b>1051D</b>
<b>Nickel aluminum bronze</b>	<b>1057</b>

### Specifications (\*)

**Model 1051-1051C-1051D-1057**

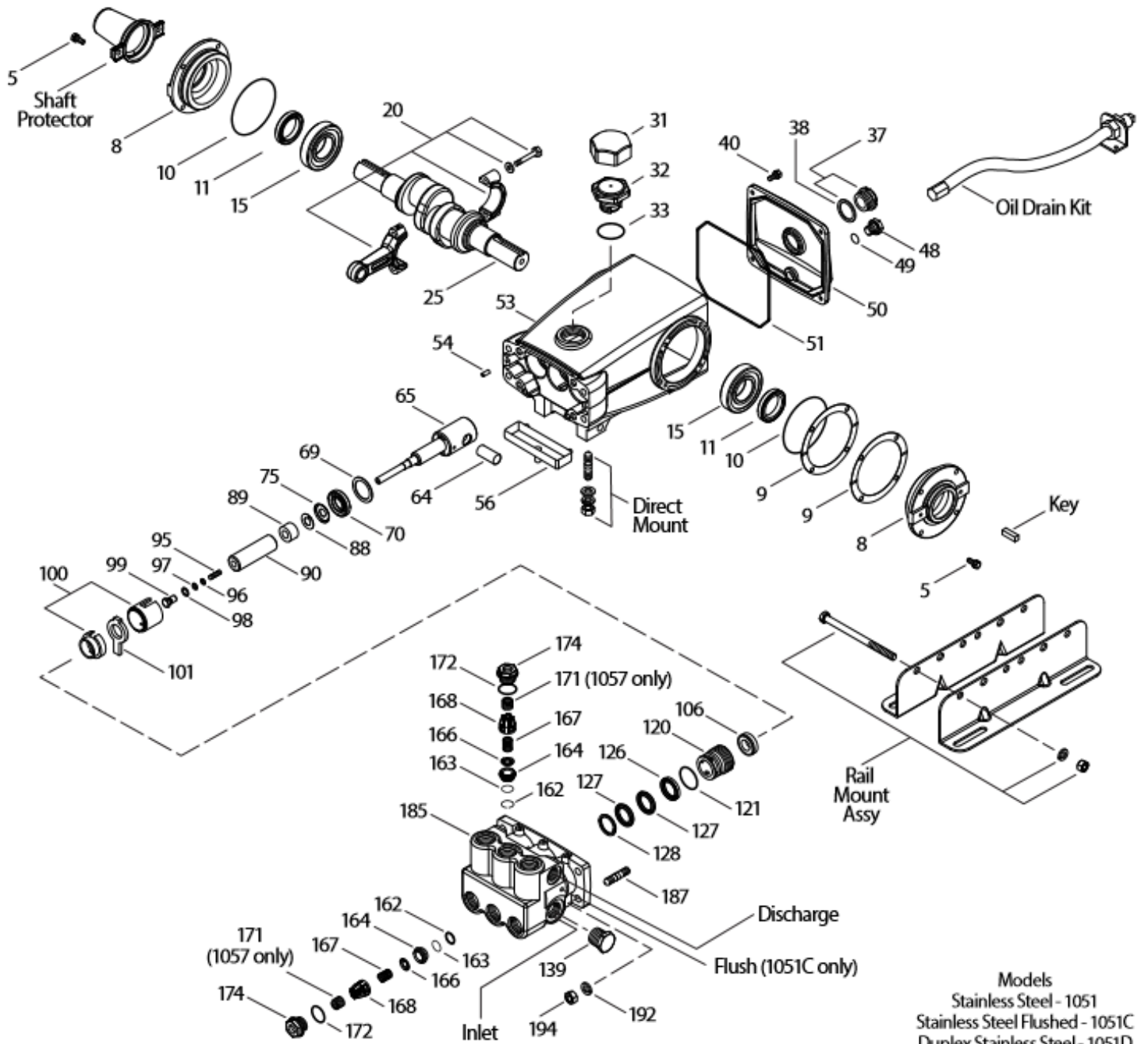
<b>Flow</b>	39,5 L/min
<b>Pressure range</b>	7 to 150 bar
<b>RPM</b>	1000 RPM
<b>Inlet pressure range</b>	- 0,35 to 4 bar
<b>Stroke</b>	30 mm

### Common specifications

<b>Bore</b>	24 mm
<b>Crankcase capacity</b>	1,26 L
<b>Maximum liquid temperature</b>	70° C
<b>Inlet ports (2)</b>	3/4" NPTF
<b>Flushing ports (1051C) (2)</b>	1/8" NPTF
<b>Discharge ports (2)</b>	1/2" NPTF
<b>Shaft diameter</b>	30 mm
<b>Weight</b>	20 kg
<b>Dimensions</b>	414 x 330 x 164 mm

(\*) Abnormalities permitted only after consultation and written confirmation from Cat Pumps.

# Exploded View



Models  
 Stainless Steel - 1051  
 Stainless Steel Flushed - 1051C  
 Duplex Stainless Steel - 1051D  
 Nickel Aluminum Bronze - 1057  
 August 2018

# Parts list

lt.	Num. 1051/C/D	Mat.	Num. 1057	Mat.	Description	Qt
5	92538	S	92538	S	Screw, sems HHC (M6x16)	8
8	43496	AL	43496	AL	Cover, bearing (see TB 118)	2
9	815281	FBR	815281	FBR	Split shim, bearing cover, 2 pc	2/4
	814800	S	814800	S	Split shim, bearing cover, 2 pc	0/4
10	11340	NBR	11340	NBR	O-ring, bearing cover – 70D	2
11	43495	NBR	43495	NBR	Seal, oil, crankshaft – 70D	2
15	39060	STL	39060	STL	Bearing, roller	2
20	48600	TNM	48600	TNM	Rod, connecting assembly {10/01}	3
25	43494	FCM	43494	FCM	Crankshaft, dual end	1
31	828710	PE	828710	PE	Protector, oil cap w/foam gasket	1
32	43211	ABS	43211	ABS	Cap, oil filler	1
33	14177	NBR	14177	NBR	O-ring, filler cap – 70D	1
37	92241	-	92241	-	Gauge, oil, bubble w/gasket – 80D	1
38	44428	NBR	44428	NBR	Gasket, flat, oil gauge – 80D	1
40	92542	S	92542	S	Screw, sems HHC (M6x20)	4
48	25625	STCP	25625	STCP	Plug, drain (1/4" x 19 BSP)	1
49	23170	NBR	23170	NBR	O-ring, drain plug – 70D	1
50	49276	ALE	49276	ALE	Cover, rear (see TB 118)	1
51	44834	NBR	44834	NBR	O-ring, rear cover – 70D	1
53	115471	AL	115471	AL	Crankcase w/guide pins (see TB 118)	1
54	27488	S	27488	S	Pin, guide	2
56	44664	POP	44664	POP	Pan, oil	1
64	43507	CM	43507	CM	Pin, crosshead	3
65	<b>48892</b>	<b>SSHB</b>	<b>45258</b>	<b>SSZZ</b>	Rod, plunger	3
69	126592	STCP R	126592	STCP R	Washer, oil seal	3
70	43500	NBR	43500	NBR	Seal, oil, crankcase – 80D	3
75	43506	S	43506	S	Slinger, barrier	3
88	45675	S	45675	S	Washer, keyhole	3
89	45879	SS	45879	SS	Collar, spacer	3
90	43552	CC	43552	CC	Plunger (M24x77)	3
95	89651	SS	89651	SS	Stud, plunger retainer (M6x70)	3
96	43235	PTFE	43235	PTFE	Back-up-ring, plunger retainer	3
97	17399	NBR	17399	NBR	O-ring, plunger retainer – 80D	3
98	44041	SS	44041	SS	Gasket, plunger retainer	3
99	44031	SS	44031	SS	Retainer, plunger (M6)	3
100	855001	POP	855001	POP	Retainer, seal, 2 pc {07/05} (see TB 098)	3
101	43554	-	43554	-	Wick, long tab	3
106	44035	NBR	44035	NBR	Seal, LPS w/SS-Spg	3
120	49286	SSNP	49286	SSNP	Case, seal {07/05}	3
121	14762	NBR	14762	NBR	O-ring, seal case – 70D	3
126	48389	D	48389	D	Adapter, female (see TB 087)	3
	45073	SS	45073	SS	Adapter, female	3
127	103692	STG	103692	STG	V-packing	6
128	45074	SS	45074	SS	Adapter, male	3
139	<b>44382</b>	<b>SS</b>	<b>44562</b>	<b>NAB</b>	Plug, inlet (3/4" NPTM)	1
162	43248	PTFE	43248	PTFE	Back-up-ring, valve seat	6
163	43249	NBR	43249	NBR	O-ring, seat – 80D	6
164	44037	SS	44037	SS	Seat	6
166	48793	SS	48793	SS	Valve	6
167	44039	SS	44039	SS	Spring, valve	6
168	44564	PVDF	44564	PVDF	Retainer, spring	6
171	-	-	<b>44832</b>	<b>S</b>	Coil spring, valve plug	6
172	17617	NBR	17617	NBR	O-ring, valve plug – 90D	6
174	<b>49293</b>	<b>SS</b>	<b>44831</b>	<b>NAB</b>	Plug, valve	6
185	<b>134823</b>	<b>SS</b>	<b>46706</b>	<b>NAB</b>	Head, manifold {08/12}	1

	<b>49188</b>	<b>SS</b>	-	-	Head, manifold flushed (1051C only)	1
	<b>134824</b>	<b>SSD</b>	-	-	Head, manifold (1051D only) {08/18}	1
187	44005	S	44005	S	Stud, manifold (M10x45)	4
192	15847	S	15847	S	Lockwasher (M10)	4
194	81258	S	81258	S	Nut, hex (M10)	4

**Bold print part numbers are unique to a particular pump model. Italics are optional items.**

{ } Date of latest production change. R components comply with RoHS directive.

See 'Tech Bulletins' 024, 035, 036, 043, 046, 049, 052, 053, 072, 074, 083, 087, 089, 098 and 118 for additional information.

Material codes: (not part or part number)

ABS	ABS plastic	HT	High Temperature	SSD	Duplex SS
AL	Aluminium	IPFE	I-Perfluoroelastomer	SSHB	316 SS / High strength brass
ALE	Aluminum Epoxy	NAB	Nickel aluminum bronze	SSNP	316 SS / Nickel Plated
CC	Ceramic	NBR	Medium nitrile (Buna-N)	SSZZ	316 SS / zamak
CM	Chrome-moly	PE	Polyethylene	STCP	Steel / chrome plated
D	Acetal	POP	Polypropylene	STG	Special Blend PTFE white
EPDM	Ethylene Propylene Diene Monomer	PTFE	Pure polytetrafluorethylene	STHT	Special PTFE High Temperature
FBR	Fiber	PVDF	Polyvinylidene fluoride	STL	Steel
FCM	Forged chrome-moly	S	304SS	TNM	Special high strength
FPM	Fluorocarbon	SS	316SS		

### OPTIONAL PARTS & ACCESSORIES

PART	DESCRIPTION	QTY
30764	Protector, shaft w/2 screws	1
30764S	Protector, shaft w/2 SS screws	1
30264	Mount, direct	1
30613	Mount, rail, assy (2.09 x 9.45)	1
30059	Hub, "H" 30 mm (M8 keyway)	1
30661	Mount, assy (inclcs 30613,30206,30059,30067,30764)	1
34334	Kit, oil drain (3/8" x 24") (see individual sheet)	1

### SERVICE PARTS

PART	DESCRIPTION	QTY
30696	Pliers, reverse	1
33006	Socket, seal case (1/2" drive)	1
30067	Key (M8 x 7.5 x 25)	1
816771	Head, complete w/NBR seals & O-rings – model 1051	1
818333	Head, complete w/NBR seals & O-rings – model 1051C	1
818442	Head, complete w/NBR seals & O-rings – model 1051D	1
815261	Head, complete w/NBR seals & O-rings – model 1057	1

### SEAL KITS - 1 seal kit required per pump

Pump model	NBR (standard)	FPM (0.0110)	EPDM (0.0220) #	IPFE (0.0770)	HTST (0.3400)		
1051/C/D/1057	33916	30986	33913	76913	76062		
Items incl.						Description	Qty
97	17399	14160	46204	701715	17399	O-ring, plunger retainer	3
100	855001	855001	855001	855001	855001	Retainer, seal 2-piece	3
106	44035	44388	46208	703243	76035	Seal, LPS w/SS-spg	3
121	14762	11737	46205	701851	14762	O-ring, seal case	3
127	103692	103692	103692	103692	103692	V-packing	6

# Silicone/oil/grease required

### VALVE KITS - : 2 valve kits required per pump

Pump model	NBR (standard)	FPM (0.0110)	EPDM (0.0220) #	IPFE (0.0770)	HTST (0.3400)		
1051/C/D/1057	34387	30987	31258	76385	34387		
Items incl.						Description	Qty
162	43248	43248	43248	43248	43248	Backup-ring, seat	3
163	43249	44383	46206	701852	43249	O-ring, seat	3
164	44037	44037	44037	44037	44037	Seat	3
166	48793	48793	48793	48793	48793	Valve	3
167	44039	44039	44039	44039	44039	Spring	3
168	44564	44564	44564	44564	44564	Retainer, spring	3
172	17617	11691	46207	701853	17617	O-ring, valve plug	3

# Silicone/oil/grease required