



Technical specifications and instructions



15 Frame Plunger pump

Standard model

640

Specifications (*)

Model 640

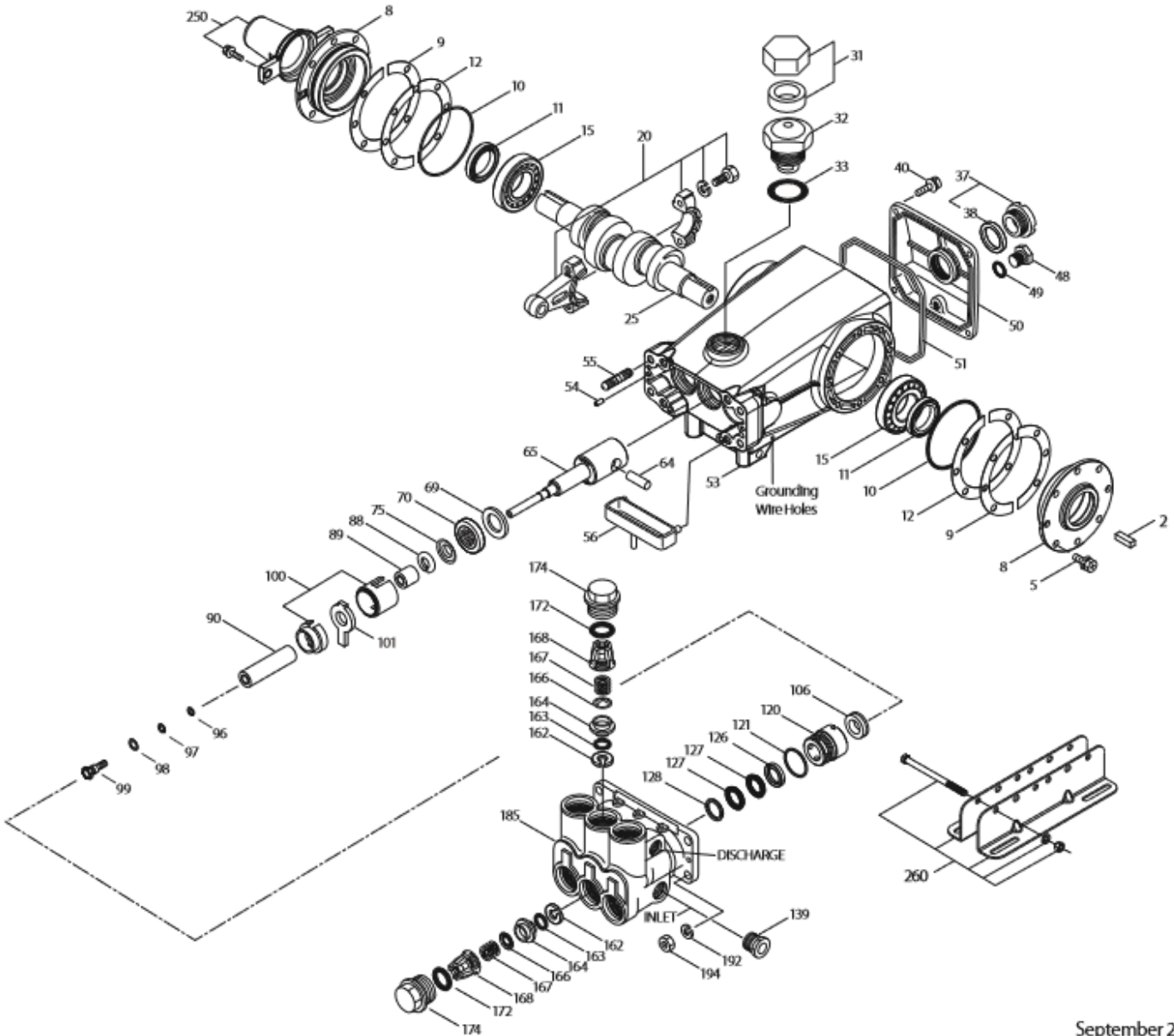
Flow	30 L/min
Pressure range	6,9 to 207 bar
RPM	1450 RPM
Inlet pressure range	Flooded to 4,1 bar
Stroke	30 mm

Common specifications

Bore	18 mm
Crankcase capacity	1,26 L
Maximum liquid temperature	71° C
Inlet ports (2)	3/4" NPTF
Discharge ports (2)	1/2" NPTF
Shaft diameter	30 mm
Weight	19 kg
Dimensions	414 x 330 x 164 mm

(*) Abnormalities permitted only after consultation and written confirmation from Cat Pumps.

Exploded View



September 2019

Parts list

Item	Num. 640	Mat.	Description	Qty
2	30067	STL	Key (M8x7,5x25)	1
5	126540	STCP R	Screw, sems HHC (M8x20) (see TB 128)	8
8	134805	ALE	Cover, bearing (see TB 118,128)	2
9	855043	FBR	Split shim, bearing cover, 2 pc (see TB 128)	0-2
10	11340	NBR	O-ring, bearing case – 70D	2
11	43495	NBR	Seal, oil, crankshaft – 70D	2
12	855044	SS	Shim, split, 2 pc (see TB 128)	0-2
15	39060	STL	Bearing, roller	2
20	48600	TNM	Rod assy, connecting {11/00}	3
25	43494	FCM	Crankshaft, dual end (M30)	1
31	828710	PE	Protector, oil cap w/foam gasket	1
32	43211	ABS	Cap, oil filler	1
33	14177	NBR	O-ring, filler cap – 70D	1
37	92241	-	Gauge, oil, bubble w/gasket – 80D	1
38	44428	NBR	Gasket, flat, oil gauge – 80D	1
40	126541	STCP R	Screw, sems HHC (M6x20)	4
48	25625	STCP	Plug, drain (1/4" x 19 BSP)	1
49	23170	NBR	O-ring, drain plug – 70D	1
50	133576	ALE	Cover, rear (see TB 118)	1
51	44834	NBR	O-ring, rear cover – 70D	1
53	134836	ALE	Crankcase (incl: 54) (see TB 118,128)	1
54	27488	S	Pin, guide	2
55	126545	STCP R	Stud (M10x45)	4
56	44664	POP	Pan, oil	1
64	43507	CM	Pin, crosshead	3
65	48228	SHS	Rod, plunger	3
69	126592	STCP R	Washer, seal	3
70	43500	NBR	Seal, oil, crankcase – 80D	3
75	43506	S	Slinger, barrier	3
88	45675	S	Washer, keyhole	3
89	43584	BB	Spacer, plunger	3
90	43232	CC	Plunger (M18x77)	3
96	43235	PTFE	Back-up-ring, plunger retainer	3
97	17399	NBR	O-ring, Plunger retainer – 80D	3
98	45891	CU	Gasket, plunger retainer	3
99	104360	S	Retainer w/stud, plunger (M5)	3
100	855001	POP	Retainer, seal, 2 pc (see TB 098)	3
101	43585	-	Wick, long tab	3
106	43586	NBR	Seal, LPS w/S-Spg	3
120	49291	BB	Case, seal	3
121	14762	NBR	O-ring, seal case – 70D	3
126	43588	BB	Adapter, female	3
127	111437	STG	V-packing	6
128	43590	BB	Adapter, male	3
139	20326	BBCP	Plug, inlet (3/4" NPTM)	1
162	43248	PTFE	Back-up-ring, seat	6
163	43249	NBR	O-ring, seat – 80D	6
164	43722	S	Seat	6
166	43721	S	Valve	6
167	43751	S	Spring	6
168	44564	PVDF	Retainer, spring	6
172	17617	NBR	O-ring, valve plug – 90D	6
174	43850	BB	Plug, valve	6
185	46787	NAB	Head, manifold	1

192	126231	STCP R	Lockwasher (M10)	4
194	126522	STCP R	Nut, hex (M10)	4
250	855046	NY	Protector, shaft w/2 screws (see TB 128)	1
260	30613	STZP R	Mount, rail assy	1
	990550	STZP R	Mount, rail (required on diesel/gas)	1
299	000640.HEAD	BB	Head, complete (w/NBR seals and O-rings)	1
300	31884	NBR*	Kit, seal (incl. 97,100,106,121,127)	1
310	30820	NBR	Kit, valve (incl. 162,163,164,166,167,168,172)	2

Italics are optional items. { } Date of latest production change. R components comply with RoHS directive. * Review individual parts in each kit for material code identification. (STG generally may be used as alternate), See 'Tech Bulletins' 024, 027, 035, 036, 043, 045, 048, 049, 052, 053, 062, 074, 083, 095, 098, 118 and 128 for additional information.

Material codes: (not part or part number)

ABS	ABS plastic	FBR	Fiber	S	304SS
ALE	Aluminum Epoxy	FCM	Forged chrome-moly	SHS	304SS / high strength
BB	Brass	NAB	Nickel aluminum bronze	SS	316SS
BBCP	Brass/chrome plated	NBR	Medium nitrile (Buna-N)	STCP	Steel / chrome plated
CC	Ceramic	NY	Nylon	STG	Special blend PTFE white
CM	Chrome-moly	PE	Polyethylene	STL	Steel
CU	Copper	POP	Polypropylene	STZP	Steel / zinc plated
EPDM	Ethylene propylene diene mon.	PTFE	Pure polytetrafluorethylene	TNM	Special high strength
F	Cast iron	PVDF	Polyvinylidene fluoride		