



Technical specifications and instructions



15 Frame Plunger pump

Standard model 660

Stainless steel model 661D

SS flushed model 661C

Specifications (*)

Model 660-661D-661C

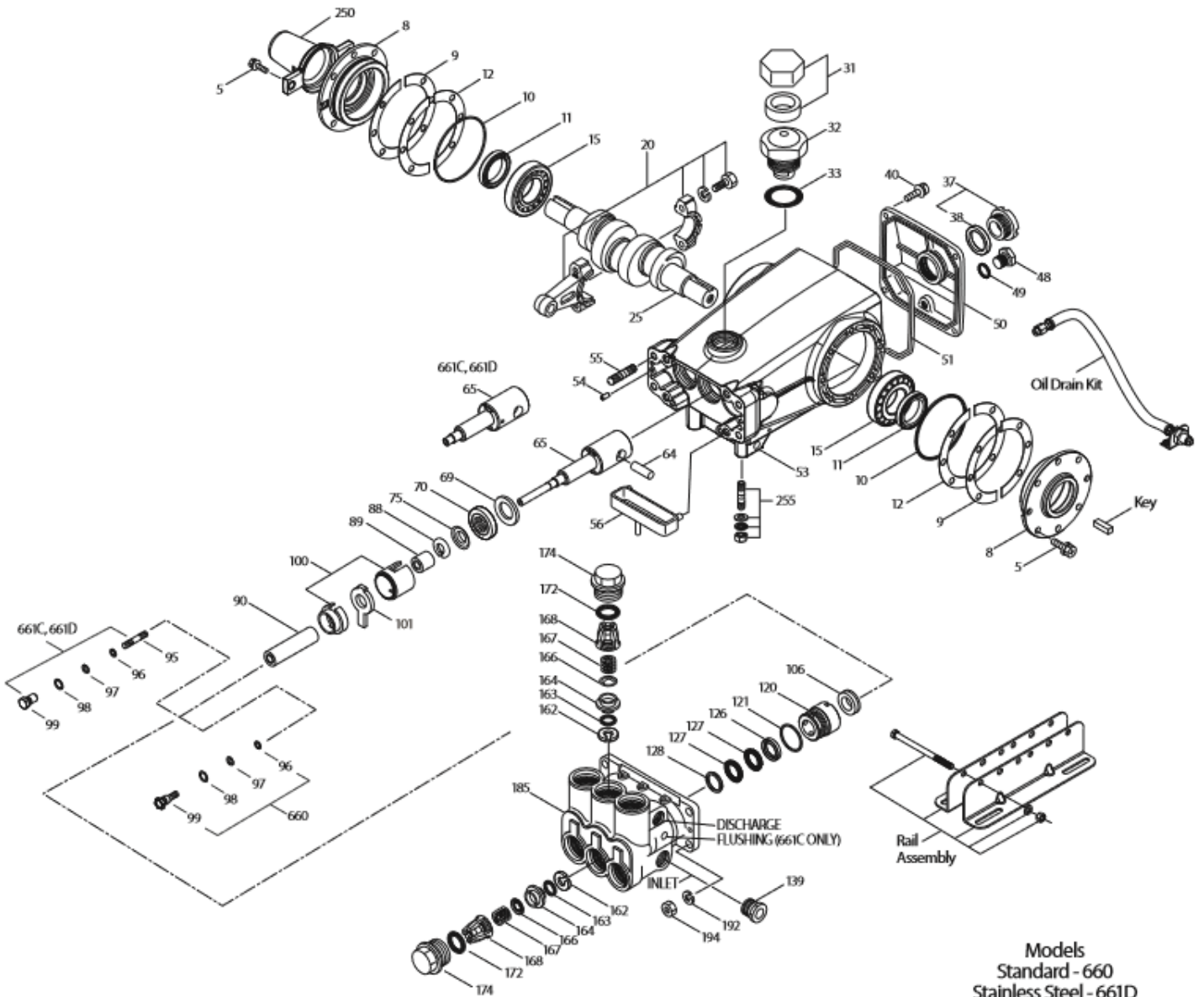
Flow	38 L/min
Pressure range	6,9 to 207 bar
RPM	1429 RPM
Inlet pressure range	Flooded to 4,1 bar
Stroke	30 mm

Common specifications

Bore	20 mm
Crankcase capacity	1,26 L
Maximum liquid temperature	71° C
Inlet ports (2)	3/4" NPTF
Flushing ports (2)(661C)	1/8" NPTF
Discharge ports (2)	1/2" NPTF
Shaft diameter	30 mm
Weight	19,9 kg
Dimensions	413,5 x 330 x 163,5 mm

(*) Abnormalities permitted only after consultation and written confirmation from Cat Pumps.

Exploded View



Models
 Standard - 660
 Stainless Steel - 661D
 Stainless Steel Flushed - 661C
 July 2019

Parts list

Item	Num. 660	Mat.	Num. 661C/D	Mat.	Description	Qty
5	126540	STCP R	49651	S	Screw, sems HHC (M6x16) (see TB 128)	8
8	134805	ALE	134805	ALE	Cover, bearing (see TB 118,128)	2
9	855043	FBR	855043	FBR	Split shim, bearing cover, 2 pc (see TB 128)	2
10	11340	NBR	11340	NBR	O-ring, bearing case – 70D	2
11	43495	NBR	43495	NBR	Seal, oil, crankshaft – 70D	2
12	855044	S	855044	S	Split shim, bearing cover, 2 pc (see TB 128)	2
15	39060	STL	39060	STL	Bearing, roller	2
20	48600	TNM	48600	TNM	Rod assy, connecting {11/00}	3
25	43494	FCM	43494	FCM	Crankshaft, dual end (M30)	1
31	<i>828710</i>	<i>PE</i>	<i>828710</i>	<i>PE</i>	<i>Protector, oil cap w/foam gasket</i>	1
32	43211	ABS	43211	ABS	Cap, oil filler	1
33	14177	NBR	14177	NBR	O-ring, filler cap – 70D	1
37	92241	PC	92241	PC	Gauge, oil, bubble w/gasket – 80D	1
38	44428	NBR	44428	NBR	Gasket, flat, oil gauge – 80D	1
40	126541	STCP R	92542	S	Screw, sems HHC (M6x20)	4
48	25625	STCP	25625	STCP	Plug, drain (1/4" x 19 BSP)	1
49	23170	NBR	23170	NBR	O-ring, drain plug – 70D	1
50	133576	ALE	133576	ALE	Cover, rear (see TB 118,128)	1
51	44834	NBR	44834	NBR	O-ring, rear cover – 70D	1
53	134836	ALE	134848	ALE	Crankcase (incl: 54) (see TB 118,128)	1
54	27488	S	27488	S	Pin, guide	2
55	126545	STCP R	44005	S	Stud (M10x45) (see TB 128)	4
56	44664	POP	44664	POP	Pan, oil	1
64	43507	CM	43507	CM	Pin, crosshead	3
65	48228	SHS	-	-	Rod, plunger, long	3
	-	-	48892	SSHB	Rod, plunger, short {03/02}	3
69	126592	STCP R	126592	STCP R	Washer, seal	3
70	43500	NBR	43500	NBR	Seal, oil, crankcase – 80D	3
75	43506	S	43506	S	Slinger, barrier	3
88	45675	S	45675	S	Washer, keyhole	3
89	43505	BB	45880	SS	Spacer, plunger	3
90	43300	CC	43300	CC	Plunger (M20x77)	3
95	-	-	89651	SS	Stud, plunger retainer (M6x70)	3
96	43235	PTFE	43235	PTFE	Back-up-ring, plunger retainer	3
97	17399	NBR	17399	NBR	O-ring, plunger retainer – 80D	3
98	45891	CU	44041	SS	Gasket, plunger retainer	3
99	-	-	44031	SS	Retainer, plunger (M6)	3
	104360	S	-	-	Retainer w/stud, plunger (M5)	3
100	855001	POP	855001	POP	Retainer, seal, 2 pc (see TB 098)	3
101	43508	-	43508	-	Wick, long tab	3
106	+44071	NBR	+44071	NBR	Seal, LPS w/SS-Spg	3
120	49291	BB	49284	SS	Case, seal {07/05}	3
121	14762	NBR	14762	NBR	O-ring, seal case – 70D	3
126	43515	BB	49152	PTFE	Adapter, female {01/04}	3
127	+44607	STG	+44607	STG	V-packing	6
128	43517	BB	44165	SS	Adapter, male	3
139	20326	BBCP	44382	SS	Plug, inlet (3/4" NPTM)	1
162	43248	PTFE	43248	PTFE	Back-up-ring, seat	6
163	43249	NBR	43249	NBR	O-ring, seat – 80D	6
164	43722	S	44037	SS	Seat	6
166	43721	S	48793	SS	Valve	6
167	43751	S	44039	SS	Spring	6
168	44564	PVDF	44564	PVDF	Retainer, spring	6
172	17617	NBR	17617	NBR	O-ring, valve plug – 90D	6

174	43850	BB	49293	SS	Plug, valve	6
185	45975	NAB	48780	SSD	Head, manifold	1
	-	-	49338	SS	Head, manifold flushed (1/8" flushing port) 661C only	1
192	126231	STCP R	15847	S	Lockwasher (M10)	4
194	126522	STCP R	81258	S	Nut, hex (M10)	4
250	855046	NY	-	-	Protector, shaft w/2 screws (see TB 128)	1
	-	-	855047	NY	Protector, shaft w/2 SS screws (see TB 128)	1

Bold print part numbers are unique to a particular pump model. Italics are optional items. # silicone oil/grease required. + Production parts different from service parts. { } Date of latest production change. R components comply with RoHS directive. * Review individual parts in each kit for material code identification. (STG generally may be used as alternate). See 'Tech Bulletins' 024, 027, 035, 036, 043, 045, 048, 049, 052, 053, 062, 074, 083, 095, 098, 118 and 128 for additional information.

MATERIAL CODES

ABS	ABS plastic	IPFE	I-Perfluoroelastomer	SHS	304SS / high strength
ALE	Aluminum Epoxy	NAB	Nickel aluminum bronze	SS	316SS
BB	Brass	NBR	Medium nitrile (Buna-N)	SSD	Duplex stainless steel
BBCP	Brass/chrome plated	NY	Nylon	SSHB	316SS / high strength brass
CC	Ceramic	PC	Poly Carbonate	SSNP	316SS/ nickel plated
CM	Chrome-moly	PE	Polyethylene	STCP	Steel / chrome plated
CU	Copper	POP	Polypropylene	STG	Special blend PTFE white
EPDM	Ethylene propylene diene mon.	PTFE	Pure polytetrafluorethylene	STL	Steel
F	Cast iron	PVDF	Polyvinylidene fluoride	STZP	Steel / zinc plated
FBR	Fiber	S	304SS	ST2	Special PTFE 2
FCM	Forged chrome-moly	SFTA	Special blend PTFE Tan	TNM	Special high strength
FPM	Fluorocarbon	SFTB	Special blend PTFE black		

OPTIONAL PARTS & ACCESSORIES

Part	Description	Qty
30661	Kit, complete mounting	1
30067	Key (M8 x 7,5 x 25)	1
30613	Assy, rail (see dimensional drawing)	1
76513	Assy, rail (see dimensional drawing)	1
30264	Kit, direct mount	1
30059	Hub, "H" (M30)	1
34334	Kit, oil drain (3/8" x 24")	1

SERVICE PARTS

Part	Description	Qty
30696	Pliers, reverse	1
33006	Socket, seal case (1/2" drive)	1
814561	Head, complete w/NBR seals & O-rings – 660	1
816780	Head, complete w/NBR seals & O-rings – 661D	1
818420	Head, complete w/NBR seals & O-rings – 661C	1

SEAL KITS - 1 seal kit required per pump

Pump model	NBR (standard)	FPM (0.0110)	EPDM (0.0220) #	IPFE (0.0770)	HTST (0.3400)		
660,661C,661D	30798*	31033	33919	76195	76056		
Items incl.						Description	Qty
97	17399	14160	46204	701715	17399	O-ring, plunger retainer	3
100	855001	855001	855001	855001	855001	Retainer, seal	3
106	44071	44381 ²	701974 ³	7031791	76071	Seal, LPS (see notes 1,2,3)	3
121	14762	11737	46205	701851	14762	O-ring, seal case	3
127	44607	44386	44607	44607	44607	V-packing	6

1 w/SS-spg, 2 w/S-spg, 3 w/NIH-spg

Silicone/oil/grease required

VALVE KITS - 2 valve kits required per pump

Pump model	NBR (standard)	FPM (0.0110)	EPDM (0.0220) #	IPFE (0.0770)			
660	30820	31263	31259				
661C, 661D	34387	30987	31258	76385			
Items incl.						Description	Qty
162	43248	43248	43248	43248		Backup-ring, valve seat	6
163	43249	44383	46206	701852		O-ring, valve seat	6
164	43722	43722	43722			Seat (model 660)	6
	44037	44037	44037	44037		Seat (model 661C, 661D)	6
166	43721	43721	43721			Valve (model 660)	6
	48793	48793	48793	48793		Valve (model 661C, 661D)	6
167	43751	43751	43751			Spring (model 660)	6
	44039	44039	44039	44039		Spring (model 661C, 661D)	6
168	44564	44564	44564	44564		Retainer, spring	6
172	17617	11691	46207	701853		O-ring, valve plug	6

Silicone/oil/grease required