



Technical specifications and instructions



25 Frame
Plunger pump
Standard brass
2530, 2530E
Stainless steel 2531
Flushed stainless steel
2531C
Nickel aluminum bronze
2537

Specifications (*)

2530-2530E-2531-2531C-2537

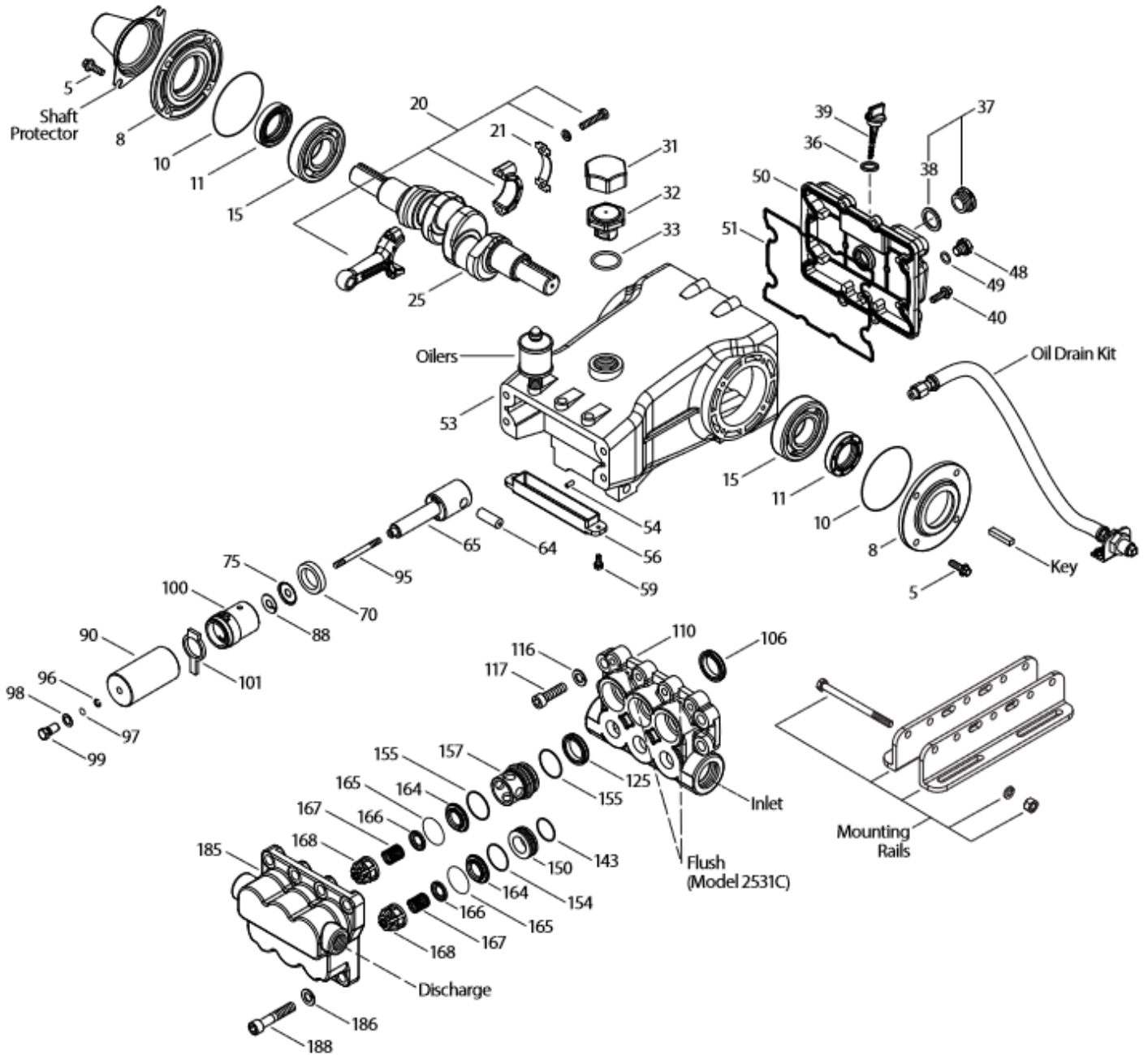
Flow	95 L/min
Pressure range	7 to 85 bar
RPM	1025 RPM
Inlet pressure range	Flooded to 4,9 bar
Stroke	38,5 mm

Common specifications

Bore	32 mm
Crankcase capacity	2,5 L
Maximum liquid temperature	71° C
Inlet ports (2)	1-1/4" NPTF
Flushing ports (2)	1/4" NPTF
Discharge ports (2)	3/4" NPTF
Shaft diameter	30 mm
Weight	31 kg
Dimensions	493 x 382 x 198 mm

(*) Abnormalities permitted only after consultation and written confirmation from Cat Pumps.

Exploded View



Models
 Brass - 2530, 2530E
 Stainless Steel - 2531, 2531C
 Nickel Aluminum Bronze - 2537
 January 2019

Parts list

lt.	Num. 2530 2530E	Mat.	Num. 2531 2531C	Mat.	Num. 2537	Mat.	Description	Qty
5	126544	STCP R	125753	S	125753	S	Screw, sems HHC (M8x25)	8
	125753	S	-	-	-	-	Screw, sems HHC (M8x25) (Model 2530E)	8
8	49533	ALE	49533	ALE	49533	ALE	Cover, bearing (see TB 118)	2
10	27772	NBR	27772	NBR	27772	NBR	O-ring, oil seal case – 70D	2
11	27771	NBR	27771	NBR	27771	NBR	Seal, oil, crankshaft – 70D	2
15	26512	STL	26512	STL	26512	STL	Bearing, ball	2
20	48613	TNM	48613	TNM	48613	TNM	Rod, connecting	3
21	126562	STCP R	126562	STCP R	126562	STCP R	Washer, locking	3
25	49795	FCM	49795	FCM	49795	FCM	Crankshaft, dual end {03/11}	1
31	828710	PE	828710	PE	828710	PE	Protector, oil cap w/gasket	1
32	43211	ABS	43211	ABS	43211	ABS	Cap, oil filler	1
33	14177	NBR	14177	NBR	14177	NBR	O-ring, oil filler cap – 70D	1
36	129343	RBR	129343	RBR	129343	RBR	Gasket, flat	1
37	92241	-	92241	-	92241	-	Gasket, oil, bubble w/gasket – 80D	1
38	44428	NBR	44428	NBR	44428	NBR	Gasket, flat, oil gauge – 80D	1
39	27769	ABS	27769	ABS	27769	ABS	Dipstick	1
40	126544	STCP R	125753	S	125753	S	Screw, sems HHC (M8x25)	8
	125753	S	-	-	-	-	Screw, sems HHC (M8 x 25) (Model 2530E)	8
48	25625	STCP	25625	STCP	25625	STCP	Plug, drain (1/4" x 19 BSP)	1
49	23170	NBR	23170	NBR	23170	NBR	O-ring, drain plug – 70D	1
50	133582	ALE	133582	ALE	133582	ALE	Cover, rear (see TB 118 and 126)	1
51	27767	NBR	27767	NBR	27767	NBR	O-ring, rear cover – 70D	1
53	49528	ALE	49528	ALE	49528	ALE	Crankcase w/guide pins (see TB 118)	1
54	27488	S	27488	S	27488	S	Pin, guide	2
56	27790	POP	27790	POP	27790	POP	Pan, oil	1
59	125824	STCP R	92538	S	92538	S	Screw, sems HHC (M6x16)	2
	92538	S	-	-	-	-	Screw, sems HHC (M6x16) (Model 2530E)	2
64	27784	CM	27784	CM	27784	CM	Pin, crosshead	3
65	+ 48719	SSHS	48719	SSHS	48719	SSHS	Rod, plunger	3
70	27785	NBR	27785	NBR	27785	NBR	Seal, crankcase oil – 70D	3
75	110669	S	110669	S	110669	S	Slinger, barrier	3
88	110670	S	110670	S	110670	S	Washer, keyhole	3
90	45749	CC	45749	CC	45749	CC	Plunger (M32x93)	3
95	+ 89835	SS	89835	SS	89835	SS	Stud, retainer (M7x87)	3
96	20184	PTFE	20184	PTFE	20184	PTFE	Back-up-ring, plunger retainer	3
97	14190	NBR	14190	NBR	14190	NBR	O-ring, plunger retainer – 70D	3
98	44069	SS	44069	SS	44069	SS	Gasket, plunger retainer	3
99	44068	SS	44068	SS	44068	SS	Retainer, plunger (M7) {07/02}	3
100	49788	NY	49788	NY	49788	NY	Retainer, LPS, front	3
	49789	NY	49789	NY	49789	NY	Retainer, LPS, rear	3
101	110796	-	110796	-	110796	-	Wick, long tab (M32)	3
106	+ 44098	NBR	+ 44098	NBR	+ 44098	NBR	Seal, LPS w/SS-Spg	3
110	49265	CFBB	48583	SS	45830	NAB	Manifold, inlet	1
	-	-	49545	SS	-	-	Manifold, inlet flushed (1/4")	1
116	126570	STCP R	19085	S	19085	S	Lockwasher, split	4
	19085	S	-	-	-	-	Lockwasher, split (Model 2530E)	4
117	126518	STCP R	88398	S	88398	S	Screw, HSH (M12x40)	4
	88398	S	-	-	-	-	Screw, HSH (M12x40) (Model 2530E)	4
125	+ 45832	SNG	45832	SNG	45832	SNG	Seal, HPS w/SS	3
143	14203	NBR	14203	NBR	14203	NBR	O-ring, adapter, LPS, rear – 70D	3
150	45752	BB	45835	SS	45835	SS	Adapter, LPS	3
154	18690	NBR	18690	NBR	18690	NBR	O-ring, adapter, LPS, front – 70D	3
155	14520	NBR	14520	NBR	14520	NBR	O-ring, adapter, valve – 70D	6
157	45751	BB	45834	SS	45834	SS	Adapter, valve	3
164	+ 46857	SS	46857	SS	46857	SS	Seat {11/95} (see TB 076)	6
165	14014	NBR	14014	NBR	14014	NBR	O-ring, seat	6
166	+ 45839	SS	45839	SS	45839	SS	Valve	6
167	+ 45840	SS	45840	SS	45840	SS	Spring	6
168	110682	PVDF	110682	PVDF	110682	PVDF	Retainer, spring	6
185	49267	CFBB	48585	SS	45836	NAB	Manifold, discharge	1

186	126570	STCP R	19085	S	19085	S	Lockwasher, split	8
	19085	S	-	-	-	-	Lockwasher, split (2530E)	8
188	126517	STCP R	89628	S	89628	S	Screw, HSH (M12x65)	8
	89628	S	-	-	-	-	Screw, HSH (M12x65) (Model 2530E)	8

Bold print part numbers are unique to a particular pump model. Italics are optional items. { } Date of latest production change. # Silicone oil/grease required. + Production parts different from service parts. R components comply with RoHS directive. See 'Tech Bulletins' 024, 036, 043, 053, 074, 076, 081, 083, 085, 095, 118 and 126 for additional information.

MATERIAL CODES (not part or part number)

ABS	ABS plastic	FPM	Fluorocarbon	S	304SS
AL	Aluminum	HT	High temperature (EPDM altern)	SNG	Special blend Buna
ALE	Aluminum epoxy	IFPE	I-Perfluoroelastomer	SS	316SS
BB	Brass	NAB	Nickel aluminum bronze	ST2	Special blend PTFE grey
CC	Ceramic	NBR	Medium nitrile (Buna-N)	STL	Steel
CFBB	Chrome forged brass	NY	Nylon	SSHS	316SS / high strength
CM	Chrome-moly	PE	Polyethylene	STCP	Steel / chrome plated
EPDM	Ethylene propylene diene mon.	POP	Polypropylene	STHT	Special PTFE High Temp
F	Cast iron	PTFE	Pure polytetrafluoroethylene	STZP	Steel / zinc plated
FCM	Forged chrome-moly	PVDF	Polyvinylidene fluoride	TNM	Special high strength

OPTIONAL PARTS & ACCESSORIES

PART	DESCRIPTION	QTY
30952	Seal kit – Standard NBR	1
33952	Valve kit - Standard NBR	2
30614	Mount, rail assembly	1
26516	Protector, shaft	1
30278	Oiler (1 oz)	1
34334	Kit, oil drain (3/8"x24")	1
30696	Plier, reverse	1

SERVICE PARTS

PART	DESCRIPTION	QTY
990036	Key, (M8 x 7 x 40)	1
6119	Lubricant, Anti-seize (2oz) (2531, 2531C)	1
6124	Gasket, liquid (3 oz)	1
701931	Sealant, Silicone (3 oz) (2530E)	1
814838	Head, complete - 2530 w/NBR seals & O-rings	1
816735	Head, complete - 2531 w/NBR seals & O-rings	1
816538	Head, complete - 2537 w/NBR seals & O-rings	1

SEAL KITS - 1 seal kit required per pump

Pump model	NBR (STD)	FPM (.0110)	EPDM (.0220) #	STHT (.3400)	IPFE (.0770)		
2530, 2530E, 2531, 2531C, 2537	30952	33607	33608	76292	31257*		
Items incl.						Description	Qty
97	14190	14161	48239	14190	703586	O-ring, plunger retainer	3
106	44098	44827	48244	76298	76298	Seal, LPS w/SS-spg	3
125	45832	48220	48220	48220	48220	Seal, HPS w/SS	3
143	14203	11731	48241	14203	701851	O-ring, adapter, LPS rear	3
154	18690	11744	48242	18690	703588	O-ring, adapter, LPS front	3
155	14520	11745	48240	14520	702962	O-ring, adapter, valve	6

Silicone/oil/grease required * Review material codes for individual items (STG generally may be used as alternative)

VALVE KITS - : 2 valve kits required per pump

Pump model	NBR (STD)	FPM (.0110)	EPDM (.0220) #		
2530, 2530E, 2531, 2531C, 2537	33952	31267	31268		
Items incl.				Description	Qty
143	14203	11731	48241	O-ring, adapter LPS rear	3
154	18690	11744	48242	O-ring, adapter, LPS front	3
155	14520	11745	48240	O-ring, adapter, Valve	6
164	46857	46857	46857	Seat	3
165	14014	48238	48243	O-ring, seat	3
166	45839	45839	45839	Valve	3
167	45840	45840	45840	Spring	3
168	110682	110682	110682	Retainer, spring	3

Silicone/oil/grease required