



Technical specifications and instructions

Stainless Steel Direct drive plunger pump



Models

2SF05SEEL

2SF10SEEL

2SF15SEEL

2SF22SEEL

Specifications (*)

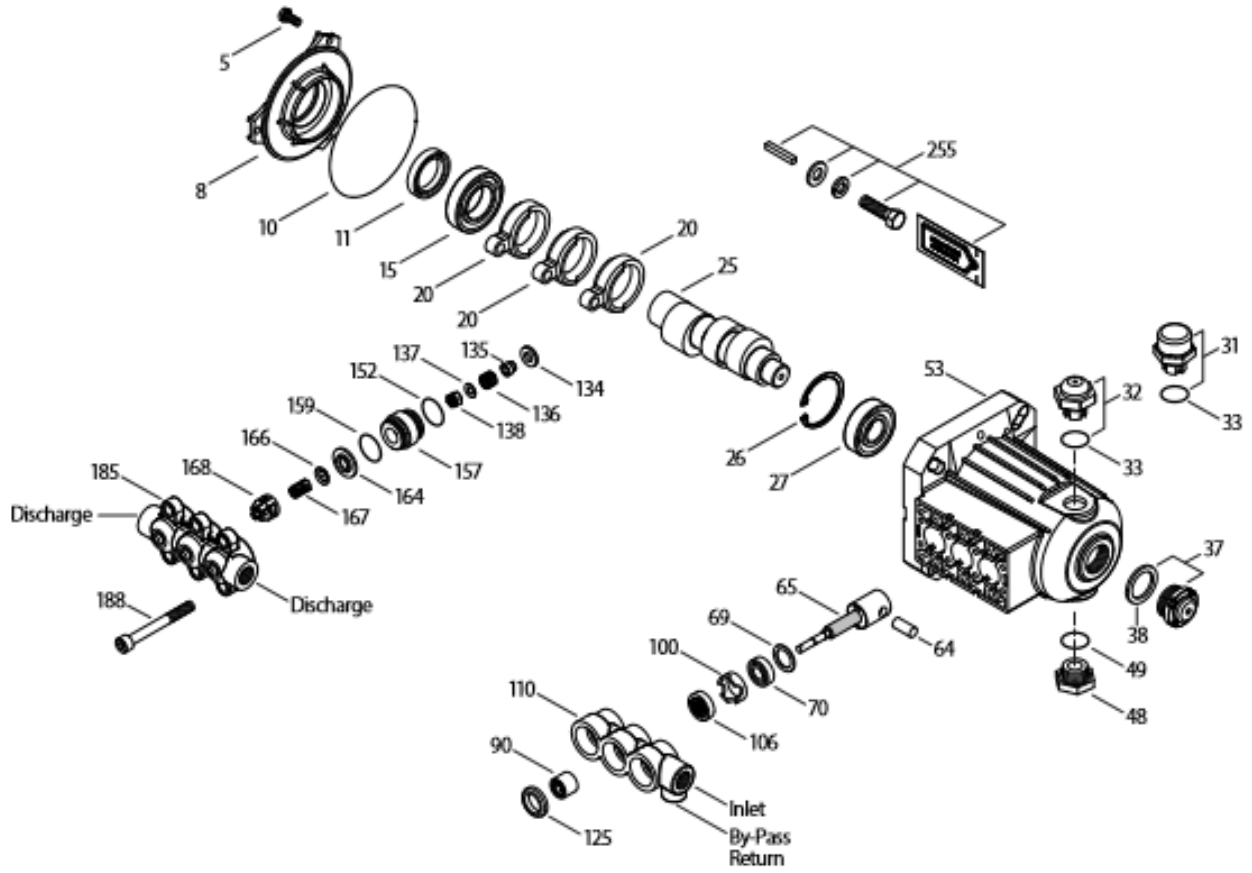
	2SF05SEEL	2SF10SEEL	2SF15SEEL	2SF22SEEL
Flow	1,6 l/min	3,2 l/min	4,8 l/min	7,0 l/min
Discharge pressure range	6,9 – 83 bar	6,9 – 83 bar	6,9 – 83 bar	6,9 – 83 bar
Stroke	1,8 mm	3,1 mm	4,5 mm	6,3 mm

Common Specifications

Pump RPM	1450 RPM
Inlet pressure range	flooded to 4,1 bar
Shaft diameter	15,9 mm
Bore	18 mm
Maximum liquid temperature	71° C
Crankcase capacity	0,3 L
Inlet port (1)	3/8" NPT(F)
Discharge ports (2)	3/8" NPT(F)
By-pass return port (1)	1/4" NPT(F)
Weight (pump only)	4 kg
Dimensions (pump only)	173 x 221 x 133 mm

(*) Abnormalities permitted only after consultation and written confirmation from Cat Pumps.

Exploded View



Models
2SF05SEEL, 2SF10SEEL
2SF15SEEL, 2SF22SEEL
September 2018

Parts list

Item	Num.	Mat.	Description	Models	Qty
5	547445	S	Screw, HHS sems (M6x14) {3/03}	All Models	3
8	547153	AL	Cover, bearing {3/03}	All Models	1
10	14041	NBR	O-ring, bearing cover – 70D {3/03}	All Models	1
11	55337	NBR	Seal, oil, cfrankshaft – 70D {3/03}	All Models	1
15	14488	STL	Bearing, ball, inner	All Models	1
20	547046	TNM	Rod, Connecting	All Models	3
25	831987	CM	Crankshaft, 1.8 mm	05SEEL	1
	46109	CM	Crankshaft, 3.1 mm	10SEEL	1
	44931	CM	Crankshaft, 4.5 mm	15SEEL	1
	45160	CM	Crankshaft, 6.3 mm	22SEEL	1
26	12385	STL	Ring, retaining, bearing	All Models	1
27	15710	STL	Bearing, ball, outer	All Models	1
31	549726	-	Cap, vented w/O-ring (rain cap)	All Models	1
32	547961	RTP	Cap, oil filler w/O-ring	All Models	1
33	14179	NBR	O-ring, oil filler cap – 70D	All Models	1
37	92241	-	Gauge, oil w/gasket – 80D	All Models	1
38	44428	NBR	Gasket, flat, oil gauge – 80D	All Models	1
48	44842	NY	Plug, drain	All Models	1
49	14179	NBR	O-ring, drain plug – 70D	All Models	1
53	547285	AL	Crankcase (see TB 92)	All Models	1
64	16948	CM	Pin, crosshead	All Models	3
65	834203	SSTO	Rod, plunger	All Models	3
69	126259	STCP R	Washer, oil seal	All Models	3
70	25461	NBR	Seal, oil crankcase	All Models	3
90	544697	CC	Plunger, ceramic (M18x18)	All Models	3
100	44869	PVDF	Retainer, seal	All Models	3
106	547683	NBR	Seal, LPS w/SS-Spg	All Models	3
	# 545192	FPM	Seal, LPS w/SS-Spg	All Models	3
	546507	EPDM	Seal, LPS w/SS-Spg	All Models	3
	76443	ST	Seal, LPS	All Models	3
110	547704	SS	Manifold, inlet	All Models	1
125	44652	SNG	Seal, HPS w/SS	All Models	3
	46652	HT	Seal, HPS 'Hi-Temp' 2-pc w/S-support	All Models	3
	76052	ST4	Seal, HPS w/s	All Models	3
134	543691	SS	Valve, inlet (see TB 91)	All Models	3
	33873	D	Valve, inlet (see TB 91)	All Models	3
135	543689	SS	Spacer	All Models	3
136	543690	SS	Spring, inlet valve	All Models	3
137	88575	S	Washer, conical (M6)	All Models	3
138	543692	SS	Nut (M6)	All Models	3
152	+ 26089	NBR	O-ring, adapter spacer, inner – 80D	All Models	3
	11377	FPM	O-ring, adapter spacer, inner – 80D	All Models	3
	# 46647	EPDM	O-ring, adapter spacer, inner – 80D	All Models	3
157	544700	SS	Adapter, valve	All Models	3
159	+ 26089	NBR	O-ring, adapter spacer, outer – 80D	All Models	3
	11377	FPM	O-ring, adapter spacer, outer – 80D	All models	3
	# 46647	EPDM	O-ring, adapter spacer, outer – 80D	All models	3
164	544293	SS	Seat	All Models	3
166	543669	SS	Valve	All Models	3
167	543700	SS	Spring	All Models	3
168	44565	PVDF	Retainer, spring	All Models	3
185	547705	SS	Manifold, discharge	All Models	1
188	544701	S	Screw, HSH (M8x80)	All Models	6
255	30517	STZP R	Assy, bolt mount	All Models	1
300	34973	NBR	Kit, seal (incl. 106, 125, 152, 159) standard	All Models	1

	33453	FPM	Kit, seal (incl. 106, 125, 152, 159)	All Models	1
	# 30536	EPDM*	Kit, seal (incl. 106, 125, 152, 159)	All Models	1
	33953	HT	Kit, seal, Hi-temp (incl. 106, 125, 134, 152, 159)	All Models	1
310	34972	NBR	Kit, valve (incl. 152, 159, 164, 166, 167, 168) standard	All Models	1
	33454	FPM	Kit, valve (incl. 152, 159, 164, 166, 167, 168)	All Models	1
	# 30546	EPDM	Kit, valve (incl. 152, 159, 164, 166, 167, 168)	All Models	1
311	39668	NBR	Kit, inlet valve w/SS IV (incl. 134-138, 152, 159) standard	All Models	1
	34974	NBR	Kit, inlet valve w/NY IV (incl. 134-138, 152, 159)	All Models	1
	33460	FPM	Kit, inlet valve w/NY IV (incl. 134-138, 152, 159)	All Models	1
	# 30556	EPDM	Kit, inlet valve w/NY IV (incl. 134-138, 152, 159)	All Models	1

Bold print part numbers are unique to a particular pump model. Italics are optional items. # Silicone oil/grease required. { } Date of latest production change. + Production parts are different than repair parts. R Components comply with RoHS directive. * Review individual parts in each kit for material code identification.

View 'Tech Bulletins' 002, 036, 043, 055, 064, 070, 073, 074, 083, 091, 092 and 124 for additional information.

Note: Discard key, which may come standard with most motors and engines and use only the key included in bolt kit.

Material codes: (not part or part number)

AL	Aluminum	NBR	Medium nitrile (Buna-N)	SSTO	316SS/Titanium oxide
CC	Ceramic	NY	Nylon	ST	Special PTFE
CM	Chrome-moly	PVDF	Polyvinylidene fluoride	ST4	Special PTFE 4
D	Acetal	RTP	Reinforced composite	STCP	Steel / chrome plated
EPDM	Ethylene propylene diene mon.	S	304 stainless steel	STL	Steel
FPM	Fluorocarbon	SNG	Special blend (buna)	STZP	Steel / zinc plated
HT	Hi-Temp (EPDM alternative)	SS	316 stainless steel	TNM	Special high strength