



Technical specifications and instructions



35 Frame Plunger pump

**Nickel Aluminum Bronze
Standard models**

3507, 3517

Flushed models

3507C, 3517C

Specifications (*)

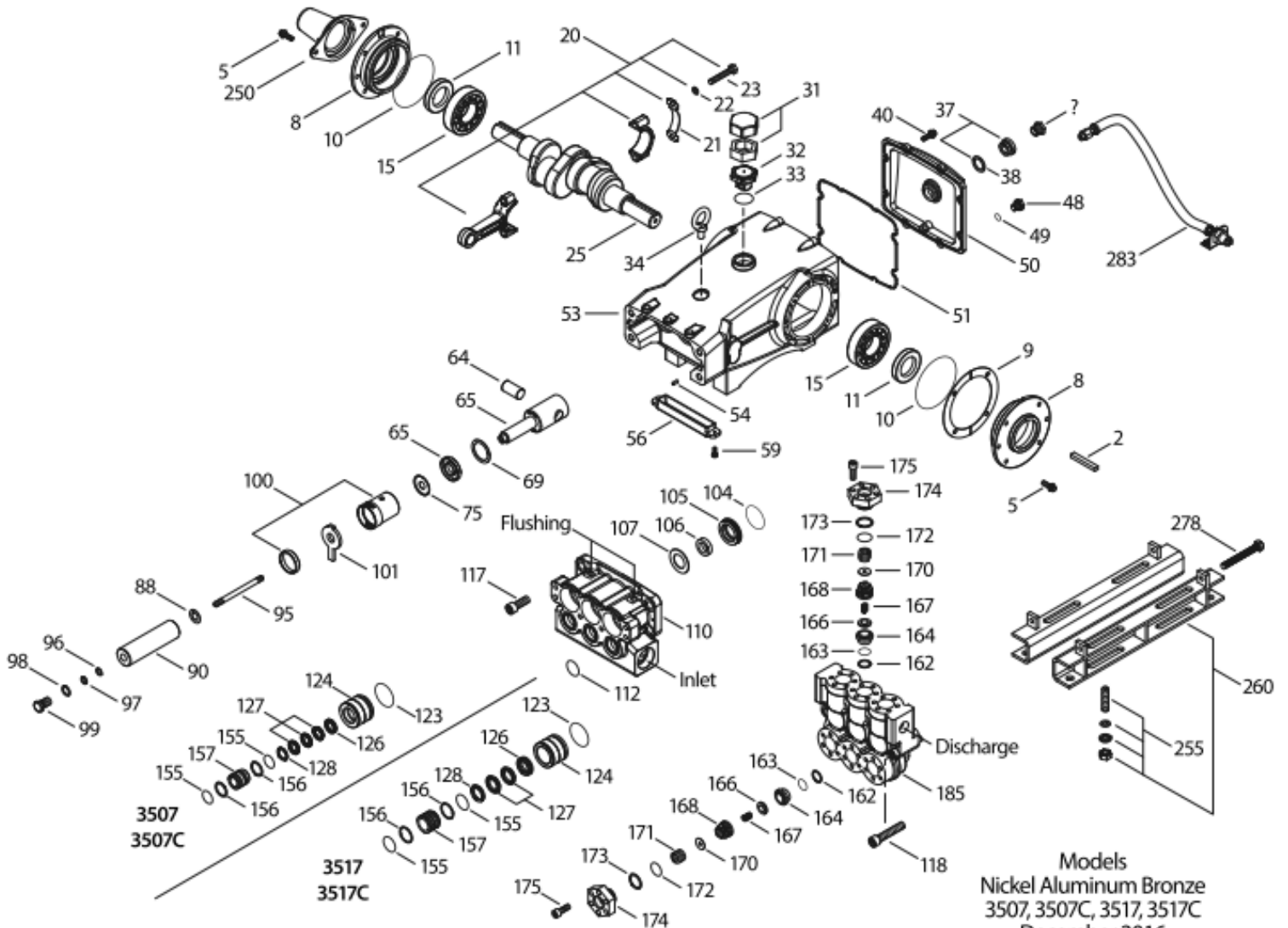
	Model 3507-3507C	Model 3517-3517C
Flow	38 L/min	53 L/min
Pressure range	6,9 to 345 bar	6,9 to 207 bar
RPM	915 RPM	800 RPM
Discharge ports (2)	3/4" NPTF	1" NPTF
Bore	20 mm	25 mm

Common specifications

Stroke	48 mm
Inlet pressure range	Flooded to 4,8 bar
Crankcase capacity	4 L
Maximum liquid temperature	71° C
Inlet ports (2)	1"-1/2" NPTF
Flushing ports (2)	1/4" NPTF
Shaft diameter	35 mm
Weight	69 kg
Dimensions	623 x 460 x 247 mm

(*) Abnormalities permitted only after consultation and written confirmation from Cat Pumps.

Exploded View



Models
Nickel Aluminum Bronze
3507, 3507C, 3517, 3517C
December 2016

Parts list

Item	Num. 3507/C	Mat.	Num. 3517/C	Mat.	Description	Qty
2	34021	STL	34021	STL	Key (M10x8x70)	1
5	125753	S	125753	S	Screw, HH sems (M8x25)	8
8	44542	AL	44542	AL	Cover, bearing (see TB 118)	2
9	815279	FBR	815279	FBR	Shim, split, 2pcs	2
10	12398	NBR	12398	NBR	O-ring, bearing cover – 70D	2
11	13296	NBR	13296	NBR	Seal, oil, crankshaft	2
15	29326	STL	29326	STL	Bearing, roller	2
20	121467	TNM	121467	TNM	Rod, Connecting assy (incl. 21,22,23) {10/00}	3
21	126749	STCP R	126749	STCP R	Washer, locking (M10)	3
22	126593	STCP R	126593	STCP R	Washer, flat (M10)	6
23	122045	STZP	122045	STZP	Screw, HH (M10x55)	6
25	29325	FCM	29325	FCM	Crankshaft, dual end (M48)	1
31	828710	PE	828710	PE	Protector, oil cap w/foam gasket	1
32	43211	ABS	43211	ABS	Cap, oil filler	1
33	14177	NBR	14177	NBR	O-ring, oil filler cap – 70D	1
34	126743	STCP R	126743	STCP R	Bolt, eye (M12x1,75) (for lifting pump only)	1
37	92241	-	92241	-	Gauge, bubble oil w/gasket – 80D	1
38	44428	NBR	44428	NBR	Gasket, flat oil gauge – 80D	1
40	125753	S	125753	S	Screw, HH sems (M8x25)	8
48	25625	STCP	25625	STCP	Plug, drain (1/4" x 19 BSP)	1
49	23170	NBR	23170	NBR	O-ring, drain plug – 70D	1
50	45936	AL	45936	AL	Cover, rear (see TB 118)	1
51	16612	NBR	16612	NBR	O-ring, cover – 70D	1
53	44487	AL	44487	AL	Crankcase assy (incl. 34,54) (see TB 118)	1
54	27488	S	27488	S	Pin, guide	2
56	27790	POP	27790	POP	Pan, oil	1
59	92538	S	92538	S	Screw, HHC sems (M6x16)	2
64	43864	CM	43864	CM	Pin, crosshead	3
65	45118	SSZZ	45116	SSZZ	Rod, plunger	3
69	126587	STCP R	126587	STCP R	Washer, oil seal	3
70	100488	NBRS	100488	NBRS	Seal, oil, crankcase	3
	44739	FPM	44739	FPM	Seal, oil, crankcase	3
75	43506	S	43865	S	Slinger, barrier	3
88	45675	S	45676	S	Washer, keyhole	3
90	43945	CC	43866	CC	Plunger (M20x145) 3507 – Plunger (M25x145) 3517	3
95	89779	S	89788	SS	Stud, retainer (M7x123) 3507 – Stud, retainer (M10x35) 3517	3
96	20184	PTFE	20189	PTFE	Back-up-ring, plunger retainer	3
97	14190	NBR	11345	NBR	O-ring, plunger retainer – 70D	3
	14161	FPM	11375	FPM	O-ring, plunger retainer	3
	#48239	EPDM	#701490	EPDM	O-ring, plunger retainer	3
98	44069	SS	-	-	Gasket, plunger retainer (M7)	3
	-	-	44085	SS	Gasket, plunger retainer (M10)	3
99	44068	SS	-	-	Retainer, plunger (M7)	3
	-	-	44084	SS	Retainer, plunger (M10)	3
100	814279	PVDF	814279	PVDF	Retainer, seal, 2 pc (see TB 105)	3
101	44095	-	44096	-	Wick	3
104	43875	NBR	43875	NBR	O-ring, adapter – 70D	3
	44826	FPM	44826	FPM	O-ring, adapter – 70D	3
	#701656	EPDM	#701656	EPDM	O-ring, adapter – 70D	3
105	44073	NAB	44088	NAB	Adapter, LPS	3
106	44071	NBR	44086	NBR	Seal, LPS w/SS-Spg	3
	44381	FPM	45846	FPM	Seal, LPS w/SS-Spg	3
	701974	SFTB	701944	SFTA	Seal, LPS w/SS-Spg	3
107	44074	SS	44089	SS	Washer, LPS	3
110	44206	NAB	44206	NAB	Manifold, inlet	1
	125970	NAB	125970	NAB	Manifold, inlet, flushed (1/4" inlet port) (3507C, 3517C)	1
112	11379	NBR	11379	NBR	O-ring, inlet manifold – 70D	3
	14183	FPM	14183	FPM	O-ring, inlet manifold	3
	#701491	EPDM	#701491	EPDM	O-ring, inlet manifold – 70D	3
117	44585	S	44585	S	Screw, HSH (M14x40)	4

123	12391	NBR	12391	NBR	O-ring, V-packing cylinder – 70D	3
	13266	<i>FPM</i>	13266	<i>FPM</i>	<i>O-ring, V-packing cylinder – 70D</i>	3
	#701657	<i>EPDM</i>	#701657	<i>EPDM</i>	<i>O-ring, V-packing cylinder – 70D</i>	3
124	44075	NAB	44090	NAB	Cylinder, V-packing	3
126	44076	NAB	44091	NAB	Adapter, female	3
127	44607	STG	-	-	V-packing	9
	-	-	44610	STG	V-packing	6
128	44077	NAB	44092	NAB	Adapter, male	3
155	17622	NBR	11379	NBR	O-ring, V-packing spacer	6
	11719	FPM	14183	FPM	<i>O-ring, V-packing spacer</i>	6
	#701654	<i>EPDM</i>	#701491	<i>EPDM</i>	<i>O-ring, V-packing spacer – 70D</i>	6
156	28675	PTFE	28243	PTFE	Back-up-ring, V-packing spacer	6
157	46668	SS	44093	NAB	Spacer, V-packing	3
162	21985	PTFE	21985	PTFE	Back-up-ring, seat	6
163	26089	NBR	26089	NBR	O-ring, seat – 80D	6
	11377	<i>FPM</i>	11377	<i>FPM</i>	<i>O-ring, seat – 80D</i>	6
	#46647	<i>EPDM</i>	#46647	<i>EPDM</i>	<i>O-ring, seat – 80D</i>	6
164	44080	SS	44080	SS	Seat	6
166	44081	SS	44081	SS	Valve	6
167	44082	SS	44082	SS	Spring	6
168	44735	PVDF	44735	PVDF	Retainer, spring	6
170	44794	SS	44794	SS	Washer, spring retainer	6
171	44793	SS	44793	SS	Spring, coil, valve plug	6
172	15853	NBR	15853	NBR	O-ring, valve plug – 70D	6
	11720	<i>FPM</i>	11720	<i>FPM</i>	<i>O-ring, valve plug – 70D</i>	6
	#701481	<i>EPDM</i>	#701481	<i>EPDM</i>	<i>O-ring, valve plug – 70D</i>	6
173	20224	PTFE	20224	PTFE	Back-up-ring, valve plug	6
174	44795	NAB	44795	NAB	Plug, valve	6
	76795	NAB	76795	NAB	Plug, valve with (1/4" NPTF) port	1
175	87951	S	87951	S	Screw, HSH (M10x30)	36
185	46561	NAB	46565	NAB	Manifold, discharge {10/99}	1
188	89981	S	89981	S	Screw, HSH (M12x70)	8
250	855042	NY	855042	NY	<i>Protector, shaft, w/2 screws, lockwashers & washers</i>	1
255	34018	STZP R	34018	STZP R	<i>Assy, direct mount</i>	1
	34039	SS	34039	SS	<i>Assy, direct mount</i>	1
260	92674	STZP R	92674	STZP R	<i>Mounting, rail, assy (incl. 34018)</i>	1
275	990013	STL	990013	STL	<i>Hub "B" 35mm w/keyway (see TB 003)</i>	1
278	80540	ZP	80540	ZP	<i>Screw, HH (M12x100)(rail adjusting screw)</i>	1
279	30278	STZP	30278	STZP	<i>Oiler (1 oz.)</i>	3
283	34314	-	34314	-	<i>Kit, oil drain (3/8" x 48")</i>	1
299	816755	NAB	816750	NAB	<i>Head, complete w/NBR seals & O-rings (only 3507 & 3517)</i>	1
300	31037	NBR*	31038	NBR*	<i>Kit, seal (incl. 97,104,106,112,123,127,155,156)</i>	1
	33265	FPM*	31266	FPM*	<i>Kit, seal (incl. 97,104,106,112,123,127,155,156)</i>	1
	76579	EPDM*	#76138	EPDM	<i>Kit, seal (incl. 97,104,106,112,123,127,155,156)</i>	1
310	34151	NBR	34151	NBR	<i>Kit, valve (incl.162,163,164,166,167,168,170,172,173)</i>	2
	701798	<i>FPM</i>	701798	<i>FPM</i>	<i>Kit, valve (incl.162,163,164,166,167,168,170,172,173)</i>	2
	#701799	<i>EPDM</i>	#701799	<i>EPDM</i>	<i>Kit, valve (incl.162,163,164,166,167,168,170,172,173)</i>	2
	819000	F	819000	F	<i>Assy, crankcase, cast iron conversion</i>	1

Bold print part numbers are unique to a particular pump model. Italics are optional items.# Silicone oil/grease required.

{ } Date of latest production change. R Components comply with RoHS directive. * Review material codes for individual items (STG generally may be used as alternate).

See 'Tech Bulletins' 002, 003, 024, 035, 036, 041, 043, 052, 053, 068, 069, 074, 077, 080, 083, 105 and 118 for additional information.

Material codes: (not part or part number)

ABS	ABS plastic	NBR	Medium nitrile (Buna-N)	SS	316SS
AL	Aluminum	NBRS	Buna, silicone free	SSZZ	316 SS/ zamak
CC	Ceramic	NY	Nylon	STCP	Steel / chrome plated
CM	Chrome-moly	PE	Polyethylene	STG	Special blend PTFE white
EPDM	Ethylene Propylene Diene Monomer	POP	Polypropylene	STL	Steel
F	Cast iron	PTFE	Pure polytetrafluoroethylene	STZP	Steel / zinc plated
FBR	Fiber	PVDF	Polyvinylidene fluoride	TNM	Special high strength
FCM	Forged chrome-moly	S	304SS	ZP	Zinc plated
FPM	Fluorocarbon	SFTA	Special Blend PTFE Tan		
NAB	Nickel aluminum bronze	SFTB	Special Blend PTFE Black		