



Technical specifications and instructions



5 Frame Plunger pump

Stainless Steel models

311, 341, 351

Stainless Steel flushed model

311C, 341C, 351C

Nickel Aluminum Bronze models

317, 347, 357

Specifications (*)

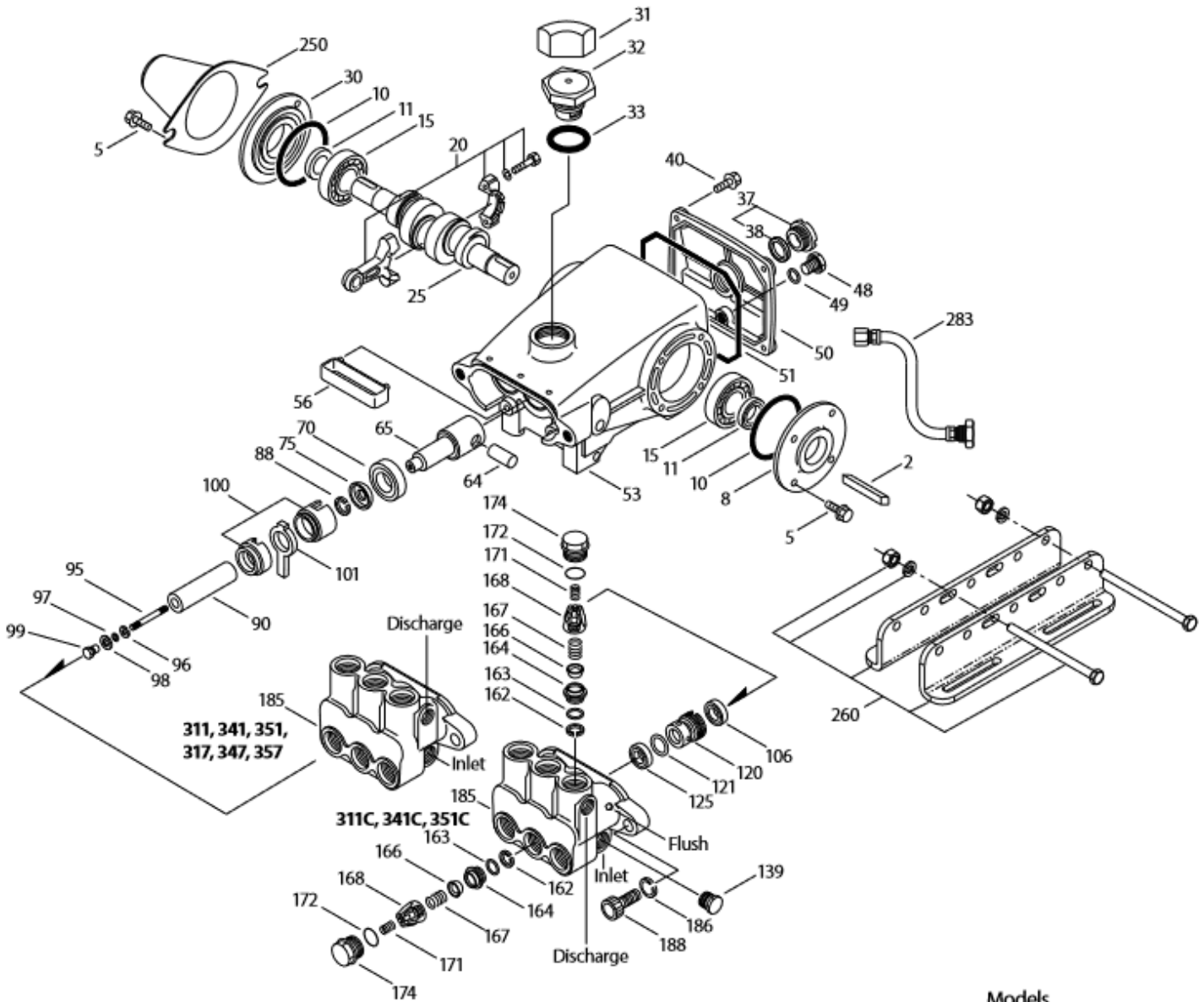
	Model 311, 311C, 317	Model 341, 341C, 347 <i>Direct drive</i>	Model 351, 351C, 357 <i>Direct drive</i>
Flow	15,5 l/min	13 l/min	15,5 l/min
Pressure range	7 to 150 bar	7 to 150 bar	7 to 150 bar
RPM	950 RPM	1420 RPM	1420 RPM
Inlet pressure range	-0,35 to 4 bar	Flooded to 4 bar	Flooded to 4 bar
Stroke	18 mm	10 mm	12 mm

Common specifications

Bore	20 mm
Crankcase capacity	0,55 l
Maximum liquid temperature	71° C
Inlet ports (2)	1/2" NPTF
Flushed ports (2)	1/8" NPTF
Discharge ports (2)	3/8" NPTF
Shaft diameter	20 mm
Weight	9 kg
Dimensions	300 x 254 x 133 mm

(*) Abnormalities permitted only after consultation and written confirmation from Cat Pumps.

Exploded View



Models
 Stainless Steel 311, 341, 351
 Stainless Steel Flushed 311C, 341C, 351C
 Nickel Aluminum Bronze 317, 347, 357
 January 2019

Parts list

Item	Num. 311, 311C 341, 341C 351, 351C	Mat.	Num. 317 347 357	Mat.	Description	Qty
2	30057	STL	30057	STL	Key (M6x6x25)	1
5	92538	S	92538	S	Screw, sems HHC (M6x16)	8
8	43344	AL	43344	AL	Cover, bearing	1/2
10	43343	NBR	43343	NBR	O-ring, bearing cover – 70D	2
11	43222	NBR	43222	NBR	Seal, oil, crankshaft – (311,311C,317,351,351C,357) (341, 341C, 347)	2/1
15	14480	STL	14480	STL	Bearing, ball	2
20	45883	HS	45883	HS	Rod, connecting assy {09/05}	3
25	43342	FCM	43342	FCM	Crankshaft, dual end – (311, 311C, 317)	1
	44945	FCM	44945	FCM	Crankshaft, single end (341, 341C, 347)	1
	43838	FCM	43838	FCM	Crankshaft, dual end (351, 351C, 357)	1
30	44949	AL	44949	AL	Cover, blind shaft (341, 341C)	1
31	828710	-	828710	-	Protector, oil cap w/foam gasket	1
32	43211	ABS	43211	ABS	Cap, oil filler	1
33	14177	NBR	14177	NBR	O-ring, filler cap – 70D	1
37	92241	-	92241	-	Gauge, oil, bubble w/gasket	1
38	44428	NBR	44428	NBR	Gasket, flat, oil gauge – 80D	1
40	92542	S	92542	S	Screw, sems HHC (M6x20)	4
48	25625	STCP	25625	STCP	Plug, drain (1/4" x 19 BSP)	1
49	23170	NBR	23170	NBR	O-ring, drain plug – 70D	1
50	48772	AL	48772	AL	Cover, rear {10/1} (see TB 090)	1
51	48773	NBR	48773	NBR	O-ring, rear cover {10/1} (see TB 090)	1
53	48769	AL	48769	AL	Crankcase {05/02} (see TB 090)	1
56	43355	POP	43355	POP	Pan, oil	1
64	43351	CM	43351	CM	Pin, crosshead	3
65	45256	SSZZ	45256	SSZZ	Rod, plunger	3
70	43228	NBR	43228	NBR	Seal, oil, crankcase	3
75	43328	S	43328	S	Slinger, barrier	3
88	45697	S	45697	S	Washer, keyhole (M18x10)	3
90	43367	CC	43367	CC	Plunger (M20x72)	3
95	89653	SS	89653	SS	Stud, plunger retainer (M6x58)	3
96	43235	PTFE	43235	PTFE	Back-up-ring, plunger retainer	3
97	17399	NBR	17399	NBR	O-ring, plunger retainer – 80D	3
	14160	FPM	14160	FPM	O-ring, plunger retainer – 80D	3
	# 46204	EPDM	# 46204	EPDM	O-ring, plunger retainer – 70D	3
98	44041	SS	44041	SS	Gasket	3
99	44031	SS	44031	SS	Retainer, plunger	3
100	45688	PVDF	45688	PVDF	Retainer, seal (2pc) {04/06} (see TB 105)	3
101	43302	-	43302	-	Wick, long tab	3
106	44127	NBR	44127	NBR	Seal, LPS w/SS-Spg	3
	45153	FPM	45153	FPM	Seal, LPS w/SS-Spg	3
	# 48429	EPDM	# 48429	EPDM	Seal, LPS w/SS-Spg	3
120	45680	SS	45680	SS	Case, seal	3
121	14200	NBR	14200	NBR	O-ring, seal case – 70D	3
	11719	FPM	11719	FPM	O-ring, seal case	3
	# 48907	EPDM	# 48907	EPDM	O-ring, seal case	3
125	44649	SNG	44649	SNG	Seal, HPS w/SS	3
	44936	FPM	44936	FPM	Seal, HPS w/SS	3
	46667	HT	46667	HT	Seal, HPS 'Hi-temp', 2-pc w/S-support	3
139	45156	SS	44563	NAB	Plug, inlet (1/2" NPTM)	1
162	48361	D	48361	D	Back-up-ring, seat	6

163	43358	NBR	43358	NBR	O-ring, seat – 70D	6
	44938	FPM	44938	FPM	O-ring, seat – 70D	6
	# 48908	EPDM	# 48908	EPDM	O-ring, seat	6
164	44128	SS	44128	SS	Seat	6
166	44057	SS	44057	SS	Valve	6
167	44056	SS	44056	SS	Spring, valve	6
168	44565	PVDF	44565	PVDF	Retainer, valve spring	6
171	44832	S	44832	S	Spring, coil	6
172	17615	NBR	17615	NBR	O-ring, valve plug – 75D	6
	15855	FPM	15855	FPM	O-ring, valve plug – 70D	6
	# 48431	EPDM	# 48431	EPDM	O-ring, valve plug – 75D	6
174	49296	SS	44833	NAB	Plug, valve {05/06}	6
185	45151	SS	44124	NAB	Manifold head (see TB 079 – NAB only)	1
	49583	SS	-	-	Manifold head – flushed (311C, 341C, 351C)	1
186	15847	S	15847	S	Lockwasher (M10)	2
188	87950	S	87950	S	Screw, HSH (M10x35) {01/04}	2
250	118672	STCP	118672	STCP	Protector, shaft (belt drive only)	1
255	30243	STZP	30243	STZP	Mount, direct (belt drive only)	1
260	30611	STZP	30611	STZP	Mount, assy rail – B (belt drive only)	1
265	30659	-	30659	-	Mount, assy (incl. 30611 30633 118672) (belt drive only)	1
270	30633	STL	30633	STL	Assy, pulley & key (incl. 30058,30057) (belt drive only)	1
275	30944	STL	30944	STL	Assy, hub & key (incl. 30057, 30945) (belt drive only)	1
283	34334	-	34334	-	Kit, oil drain (38"x24") (see individual Data Sheet)	1
299	812207	SS	814559	NAB	Head, complete	1
	818444	SS	-	-	Head, complete-flushed (311C, 341C, 351C)	1
300	34153	NBR	34153	NBR	Kit, seal (incl. 97,101,106,121,125) standard	1
	34155	FPM	34155	FPM	Kit, seal (incl. 97,101,106,121,125)	1
	33623	HT	33623	HT	Kit, seal 'Hi Temp' (incl. 97,101,106,121,125)	1
	# 31163	EPDM*	# 31163	EPDM*	Kit, seal (incl. 97,101,106,121,125)	1
310	31152	NBR	31152	NBR	Kit, valve preassembled (incl. 162-164,166-168,171,172) st	2
	34152	FPM	34152	FPM	Kit, valve preassembled (incl. 162-164,166-168,171,172)	2
350	30696	STZP	30696	STZP	Plier, Reverse	1
351	33004	STZP	33004	STZP	Socket, seal case (1/2" drive)	1

Bold print part numbers are unique to a particular pump model. Italics are optional items. # Silicone oil/grease required. { } Date of latest production change. * Review individual parts in each kit for material code identification. See 'Tech Bulletins' 002, 003, 008, 024, 027, 032, 035, 036, 043, 045, 046, 049, 052, 053, 054, 073, 074, 079, 083, 090, 095 and 105 for additional information.

Material codes: (not part or part number)

ABS	ABS plastic	HT	High Temp (EPDM alternative)	S	304SS
AL	Aluminium	HS	High strength	SNG	Special blend (Buna)
CC	Ceramic	NAB	Nickel aluminum bronze	SS	316SS
CM	Chrome-moly	NBR	Medium nitrile (Buna-N)	SSZZ	316SS/zamac
D	Acetal	POP	Polypropylene	STCP	Steel/chrome plated
EPDM	Ethylene propylene diene mon.	PTFE	Pure polytetrafluorethylene	STL	Steel
FCM	Forged chrome-moly	PVDF	Polyvinylidene fluoride	STZP	Steel/zinc plated
FPM	Fluorocarbon				