



Technical specifications and instructions



5CP - Plunger pump

Standard models

5CP2110W

5CP2120W

5CP2140WCS

5CP2150W

Special brass models

5CP2120B

5CP2140BCS

5CP2150B

Specifications (*)

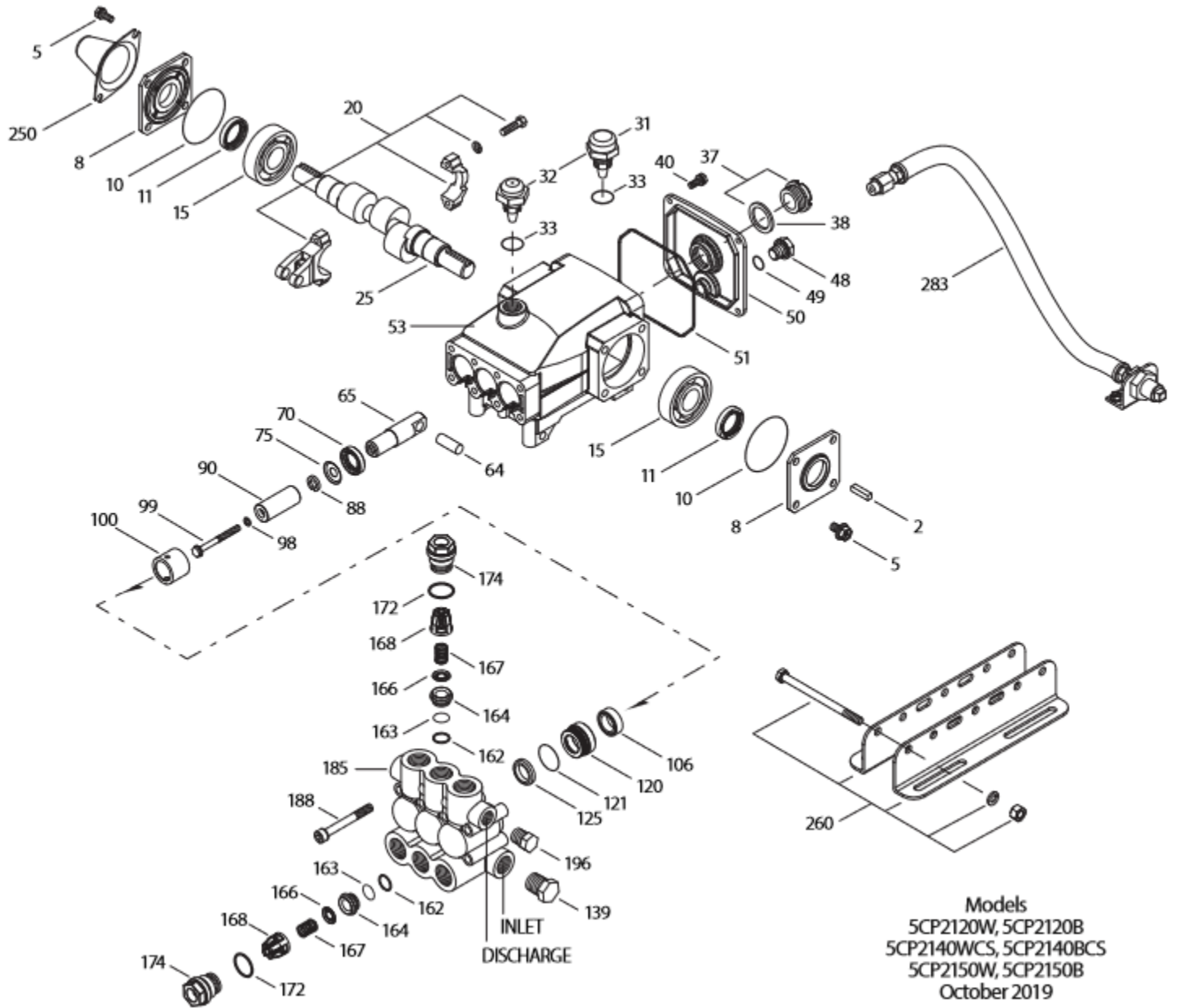
	Model 5CP2110W	Model 5CP2120W 5CP2120B	Model 5CP2140WCS 5CP2140BCS	Model 5CP2150W 5CP2150B
Flow	8,7 l/min	15,5 l/min	13 l/min	15,5 l/min
Pressure range	7 to 175 bar	7 to 175 bar	7 to 175 bar	7 to 175 bar
RPM	1420 RPM	950 RPM	1420 RPM	1420 RPM
Stroke	7,2 mm	18 mm	10 mm	12 mm

Common specifications

Inlet pressure range	Flooded to 4,1 bar
Bore	20 mm
Crankcase capacity	0,50 L
Maximum liquid temperature (NBR)	71° C
Inlet ports (2)	1/2" NPTF
Discharge ports (2)	3/8" NPTF
Shaft diameter	20 mm
Weight	8,7 kg
Dimensions	263 x 254 x 147 mm

(*) Abnormalities permitted only after consultation and written confirmation from Cat Pumps.

Exploded View



Parts list

Item	Num.	Mat.	Description	Qty
2	30057	STL	Key (M6x6x25)	1
5	126542	STCP R	Screw, sems HHC (M8x16)	8
8	46910	AL	Cover, bearing (2120-2140-2150)	2/1/2
10	14028	NBR	O-ring, bearing cover – 70D	2
11	43222	NBR	Seal, oil, crankshaft – 70D (2120-2140-2150)	2/1/2
15	14480	STL	Bearing, ball	2
20	48742	TNM	Rod, Connecting assy {10/01}	3
25	48395	FCM	Crankshaft, dual end – 5CP2110W	1
	46928	FCM	Crankshaft, dual end – 5CP2120W-5CP2120B	1
	48203	FCM	Crankshaft, single end – 5CP2140WCS-5CP2140BCS	1
	46982	FCM	Crankshaft, dual end – 5CP2150W-5CP2150B	1
30	48224	AL	Cover, bearing blind – 5CP2140WCS-5CP2140BCS	1
31	127409	-	Cap, vented w/O-ring (rain cap)	1
32	46798	-	Cap, oil filler, domed	1
33	14179	NBR	O-ring, oil filler cap – 70D	1
37	92241	-	Gauge, oil, bubble w/gasket – 80D	1
38	44428	NBR	Gasket, flat, oil gauge – 80D	1
40	125824	STCP R	Screw, sems HHC (M6x16)	4
48	25625	STCP	Plug, drain (1/4" x 19 BSP)	1
49	23170	NBR	O-ring, drain plug – 70D	1
50	46940	AL	Cover, rear	1
51	14044	NBR	O-ring, rear cover	1
53	48617	AL	Crankcase	1
64	46746	CM	Pin, crosshead	3
65	48458	BBNP	Rod, plunger	3
70	46838	NBR	Seal, oil, crankcase – 70D	3
75	43328	S	Slinger, barrier	3
88	45697	S	Washer, keyhole (M18x10)	3
90	46841	CC	Plunger (M20x50)	3
98	46730	NBR	Washer, seal – 90D	3
	48394	FPM	Washer, seal – 90D	3
	# 48432	EPDM	Washer, seal	3
99	+ 48201	SS	Retainer, plunger s/stud (M6)	3
100	46749	PVDF	Retainer, seal	3
106	43305	NBR	Seal, LPS w/S-Spg	3
	45153	FPM	Seal, LPS w/SS-Spg	3
	# 48429	EPDM	Seal, LPS w/SS-Spg	3
	76305	ST2	Seal, LPS w/SS-Spg	3
120	46843	BB	Case, seal	3
	49436	BB	Case, seal (use w/76305, 13978)	3
121	13978	NBR	O-ring, seal case – 70D	3
	14329	FPM	O-ring, seal case	3
	# 48904	EPDM	O-ring, seal case	3
125	43307	SNG	Seal, HPS w/S	3
	44936	FPM	Seal, HPS w/SS	3
	46667	HT	Seal, HPS, 2-pc w/S-Support	3
139	22179	BBCP	Plug, inlet (1/2"NPTM)	1
162	48361	D	Back-up-ring, seat	6
163	43358	NBR	O-ring, seat – 70D	6
	44938	FPM	O-ring, seat – 70D	6
	# 48908	EPDM	O-ring, seat	6
164	43725	S	Seat	6
166	43723	S	Valve	6

167	43750	S	Spring	6
168	44565	PVDF	Retainer, spring	6
172	17615	NBR	O-ring, valve plug – 75D	6
	15855	FPM	O-ring, valve plug – 70D	6
	# 48431	EPDM	O-ring, valve plug – 75D	6
174	43849	BBCP	Plug, valve	6
185	48245	W770	Manifold, head – W770	1
	49716	SBCP	Manifold, head – Special brass	1
188	126513	STCP R	Screw, HSH (M8x70)	8
196	22187	BBCP	Plug, discharge (3/8"NPTM)	1
250	118672	STCP	Protector, shaft	1
255	30243	STZP	Mount, direct (not shown)	1
260	30611	STZP R	Mounting, angle rail (belt drive only)	1
	30637	STZP	Mount, angle assy-retro fit (see TB 078)	1
265	30659	-	Mount, assy (incls 30611, 30633, 118672)	1
275	30944	STL	Hub & key assy (incls 30057, 30945)	1
283	34334	-	Kit, oil drain (3/8"x 24")(see individual data sheet)	1
	76334	-	Kit, oil level indicator (3/8"x24") (see individual data sheet)	1
299	816650	W770	Head, complete – W770 w/NBR seals & O-rings	1
	818472	SBCP	Head, complete – special brass w/NBR seals & O-rings	1
300	33628	NBR	Kit, seal (incls. 98, 106, 121, 125) standard	1
	31628	FPM	Kit, seal (incls. 98, 106, 121, 125)	1
	# 31648	EPDM*	Kit, seal (incls. 98, 106, 121, 125)	1
	31638	HT	Kit, seal (incls. 98, 106, 121, 125)	1
	76536	STHT	Kit, seal (incls. 98, 106, 120, 121, 125)	1
310	30821	NBR	Kit, valve (incls: 162, 163, 164, 166, 167, 168, 172) standard	2
	31821	FPM	Kit, valve (incls: 162, 163, 164, 166, 167, 168, 172)	2
	# 31162	EPDM	Kit, valve (incls: 162, 163, 164, 166, 167, 168, 172)	2

Bold print numbers are unique to a particular pump model. Italics are optional items. # Silicone oil/grease required.
+ Production parts are different than service parts. R Components comply with RoHS directive. { } Date of latest production change. W770 effective with 97 production. * Review individual parts in each kit for material code identification.
Review 'Tech Bulletins' 024, 036, 043, 053, 060, 061, 064, 073, 074, 078, 083 and 103 for additional information.

Material codes: (not part or part number)

AL	Aluminum	FCM	Forged chrome-moly	SS	316 stainless steel
BB	Brass	FPM	Fluorocarbon	ST2	Special PTFE 2
BBCP	Brass / chrome plated	HT	Hi-Temp (EPDM alternative)	STCP	Steel / chrome plated
BBNP	Brass nickel plated	NBR	Medium nitrile (Buna-N)	STHT	Special PTFE high temp
CC	Ceramic	PVDF	Polyvinylidene fluoride	STL	Steel
CM	Chrome-moly	S	304 stainless steel	STZP	Steel / zinc plated
D	Ecetal	SBCP	Special brass / chrome plated	TNM	Special high strength
EPDM	Ethylene propylene diene mon.	SNG	Special blend (Buna)	W770	Special alloy