



## Technical specifications and instructions



**5CP**

**Plunger pump**

**Standard Model**

**5CP6120**

**Gearbox Model**

**5CP6120CSSG1**

### Specifications (\*)

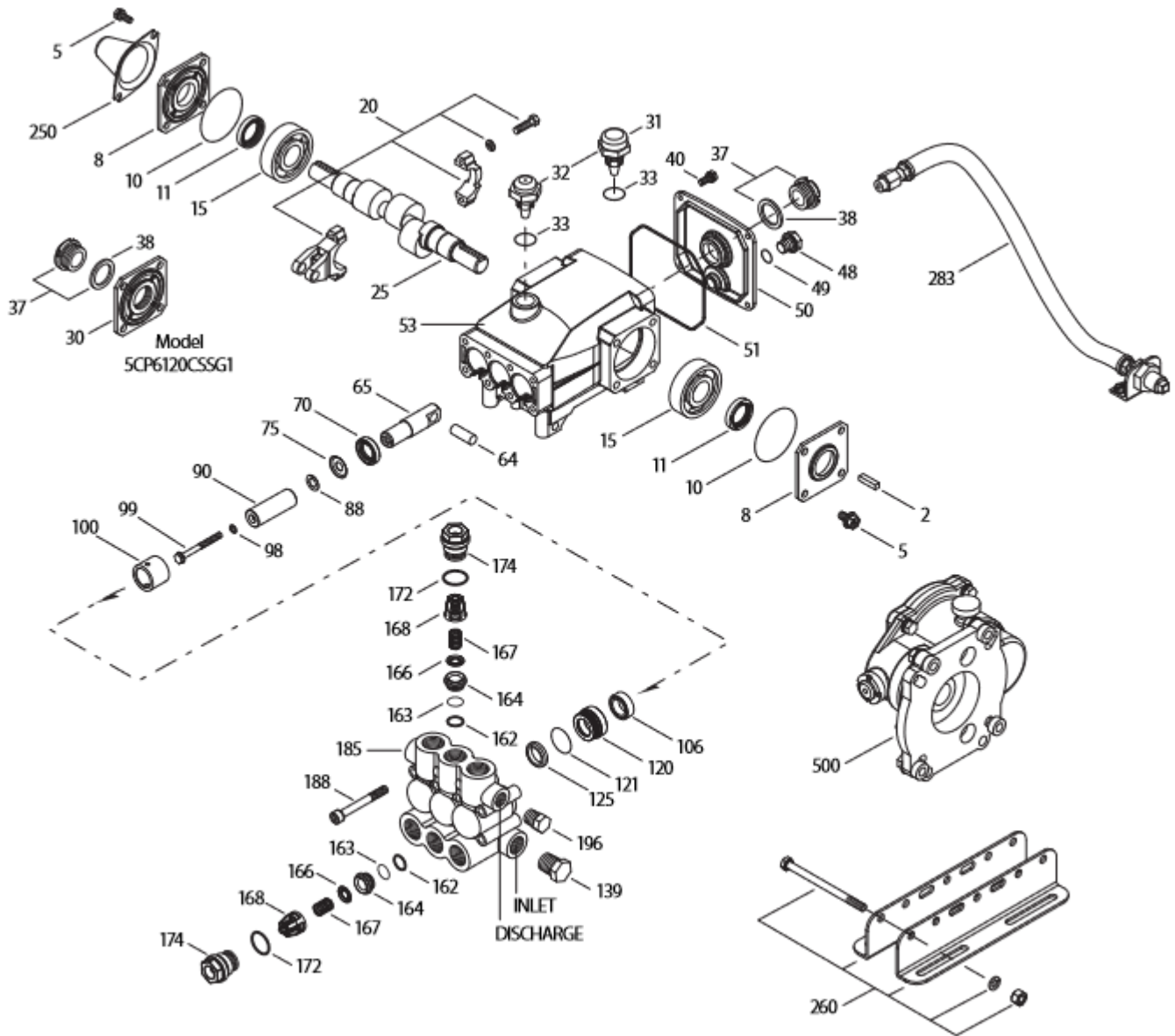
	<b>Model 5CP6120</b>	<b>Model 5CP6120CSSG1</b>
<b>Flow</b>	23 l/min	27 l/min
<b>Pressure range</b>	6,9 to 110 bar	6,9 to 103 bar
<b>Pump RPM</b>	1400 RPM	1700 RPM
<b>Motor RPM</b>	-	3450 RPM
<b>Bore</b>	20 mm	20 mm
<b>Stroke</b>	18 mm	18 mm
<b>Weight</b>	9 kg	12 kg

### Common specifications

<b>Inlet pressure range</b>	Flooded to 4,1 bar
<b>Crankcase capacity</b>	0,50 L
<b>Maximum liquid temperature</b>	71° C
<b>Inlet ports (2)</b>	1/2" NPTF
<b>Discharge ports (2)</b>	3/8" NPTF
<b>Shaft diameter</b>	20 mm
<b>Dimensions (pump only)</b>	279 x 254 x 147 mm
<b>Dimensions (with gearbox)</b>	279 x 315 x 162 mm

(\*) Abnormalities permitted only after consultation and written confirmation from Cat Pumps.

# Exploded View



Models  
SCP6120, SCP6120CSSG1  
November 2019

# Parts list

Item	Num.	Mat.	Description	Qty
	<b>5CP6120</b>			
	<b>5CP6120CSSG1</b>			
2	30057	STL	Key (M6x6x25)	1
5	126542	STCP R	Screw, HHC sems (M8x16)	8
8	46910	AL	Cover, bearing	2-1
10	14028	NBR	O-ring, bearing cover – 70D	2-1
11	43222	NBR	Seal, oil, crankshaft – 70D	2-0
15	14480	STL	Bearing, ball	2
20	48742	TNM	Rod, connecting assy {10/01}	3
25	<b>46928</b>	<b>FCM</b>	Crankshaft, M18, dual end – 5CP6120	1
	<b>48233</b>	<b>FCM</b>	Crankshaft, M18, single end – 5CP6120CSSG1	1
30	49776	AL	Cover, bearing – 5CP6120CSSG1	1
31	127409	-	Cap, vented w/O-ring (rain cap)	1
32	46798	-	Cap, oil filler, domed	1
33	14179	NBR	O-ring, oil filler cap – 70D	1
37	92241	PC	Gauge, oil, bubble w/gasket – 80D	1-2
38	44428	NBR	Gasket, flat, oil gauge – 80D	1-2
40	125824	STCP R	Screw, HHC sems (M6x16)	4
48	25625	STCP	Plug, drain (1/4"x19BSP)	1
49	23170	NBR	O-ring, drain plug – 70D	1
50	46940	AL	Cover, rear	1
51	14044	NBR	O-ring, rear cover	1
53	48617	AL	Crankcase	1
64	46746	CM	Pin, crosshead	3
65	48458	BBNP	Rod, plunger	3
70	46838	NBR	Seal, oil, crankcase – 70D	3
75	43328	S	Slinger, barrier	3
88	45697	S	Washer, keyhole (M18x10)	3
90	46841	CC	Plunger (M20x50)	3
98	46730	NBR	Washer, seal – 90D	3
	48394	FPM	Washer, seal – 90D	3
	# 48432	EPDM	Washer, seal	3
99	+ 48201	SS	Retainer, plunger w/stud (M6)	3
100	46749	PVDF	Retainer, seal	3
106	43305	NBR	Seal, LPS w/S-Spg	3
	45153	FPM	Seal, LPS w/SS-Spg	3
	76305	ST2	Seal, LPS w/S-Spg	3
120	46843	BB	Case, seal	3
	49436	BB	Case, seal (5CP6120.3400 only) (use with 76305,13978)	3
121	13978	NBR	O-ring, seal case – 70D	3
	14329	FPM	O-ring, seal case	3
	# 48904	EPDM	O-ring, seal case	3
125	43307	SNG	Seal, HPS w/S	3
	44936	FPM	Seal, HPS w/S	3
	46667	HT	Seal, HPS, 2-pc w/S-support	3
139	22179	BBCP	Plug, inlet (1/2" NPTM)	1
162	43248	PTFE	Back-up-ring, seat	6
163	43249	NBR	O-ring, seat – 80D	6
	44383	FPM	O-ring, seat – 70D	6
	# 46206	EPDM	O-ring, seat – 70D	6
164	43722	S	Seat	6
166	43721	S	Valve	6
167	43751	S	Spring	6

168	44564	PVDF	Retainer, spring	6
172	17617	NBR	O-ring, valve plug – 90D	6
	11691	FPM	O-ring, valve plug – 90D	6
	# 46207	EPDM	O-ring, valve plug – 70D	6
174	125214	BBCP	Plug, valve	6
185	49761	BBCP	Manifold, head	1
188	126513	STCP R	Screw, HSH (M8x70)	8
196	22187	BBCP	Plug, discharge (3/8" NPTM)	1
250	118672	STCP	Protector, shaft (model 5CP6120 only)	1
255	30243	STZP	Mount, direct	1
260	30611	STZP R	Mount, rail, assy	1
	30637	STZP	Mount, angle assy-retro fit (see TB 078)	1
265	30659	-	Kit, complete mounting (incl 30611,30633,118672) (model 5CP6120 only)	1
275	30944	STL	Assembly, Hub & Key (incl 30945, 30057)	1
283	34334	-	Kit, oil drain (3/8"x24") (see individual datasheet)	1
	76334	-	Kit, oil indicator (3/8"x24") (see individual datasheet)	1
299	816666	BBCP	Head, complete w/NBR seals & O-rings	1
300	33628	NBR	Kit, seal (incls: 98,106,121,125) <b>standard</b>	1
	31628	FPM	Kit, seal (incls: 98,106,121,125)	1
	# 31648	EPDM	Kit, seal (incls: 98,106,121,125)	1
	31638	HT	Kit, seal (incls: 98,106,121,125)	1
	76536	STHT	Kit, seal (incls: 98,106,120,121,125)	1
310	30820	NBR	Kit, valve (incls:,162,163,164,166,167,168,172) <b>standard</b>	2
	31263	FPM	Kit, valve (incls:,162,163,164,166,167,168,172)	2
	# 31259	EPDM	Kit, valve (incls:,162,163,164,166,167,168,172)	2
350	30696	STZP	Pliers, reverse	1
500	8076	-	Gearbox (see individual datasheet)	1

**Bold print numbers are unique to a particular pump model. Italics are optional items. { }** Date of latest production change.  
# Silicone oil/grease required. + Production parts are different than repair parts. R Components comply with RoHS directive.  
View 'Tech Bulletins' 024, 036, 043, 053, 060, 061, 064, 073, 074, 078 and 083 for additional information.

Material codes: (not part or part number)

AL	Aluminum	FPM	Fluorocarbon	SS	316 stainless steel
BB	Brass	HT	Hi-Temp (EPDM alternative)	ST2	Special blend PTFE grey
BBCP	Brass / chrome plated	NBR	Medium nitrile (Buna-N)	STCP	Steel / chrome plated
BBNP	Brass nickel plated	PC	Poly Carbonate	STHT	Special PTFE High Temp
CC	Ceramic	PTFE	Pure polytetrafluoroethylene	STL	Steel
CM	Chrome-moly	PVDF	Polyvinylidene fluoride	STZP	Steel / zinc plated
EPDM	Ethylene propylene diene mon.	S	304 stainless steel	TNM	Special high strength
FCM	Forged chrome-moly	SNG	Special blend (Buna)		