



Technical specifications and instructions



5CP Plunger pump

Standard Models

5CP6180CSS

5CP6190

Gearbox Model

5CP6190G1

Specifications (*)

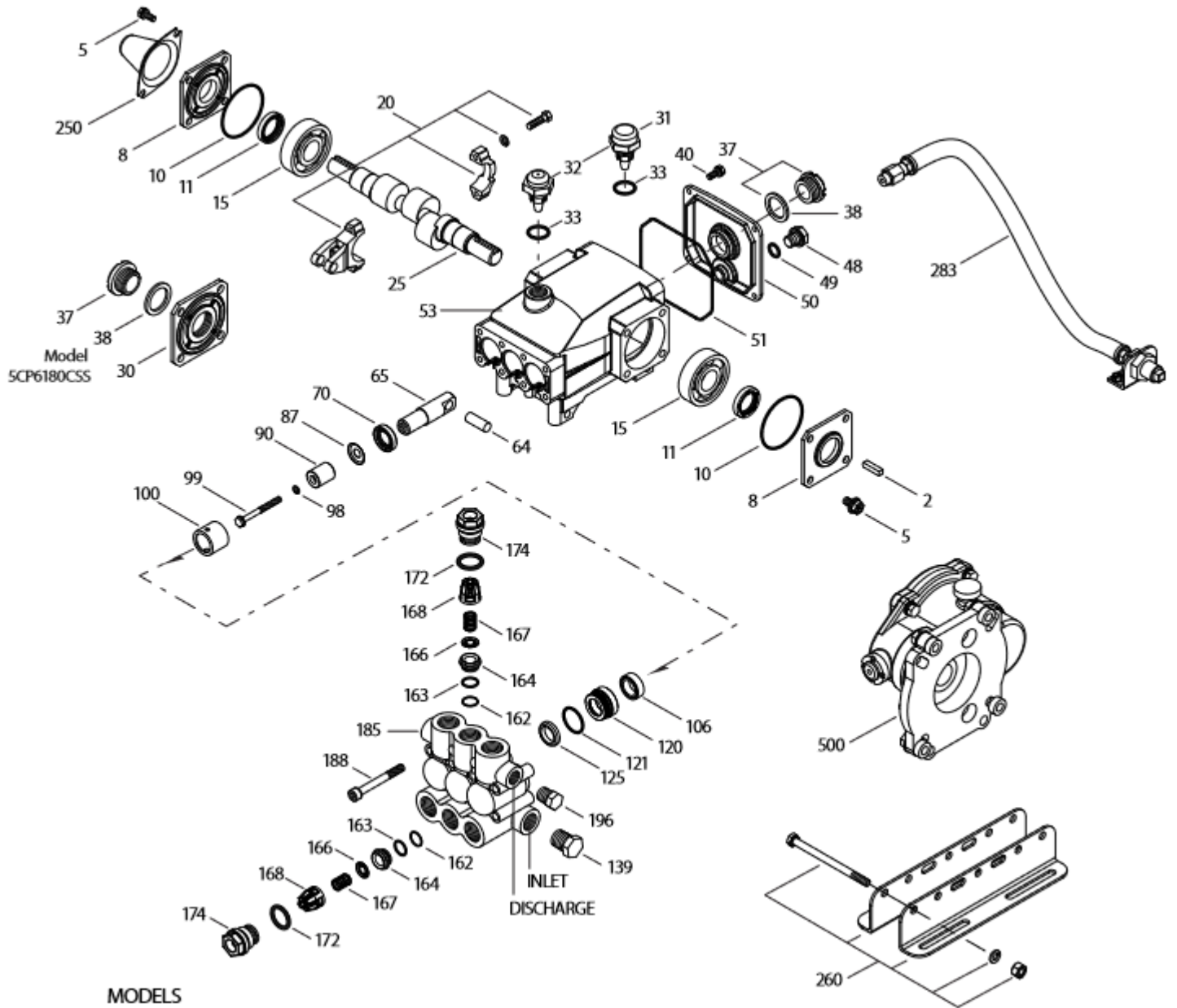
	Model 5CP6180CSS	Model 5CP6190	Model 5CP6190G1
Flow	26 l/min	31 l/min	33 l/min
Pressure range	7 to 105 bar	7 to 85 bar	7 to 85 bar
Pump RPM	1450 RPM	1450 RPM	1570 RPM
Engine RPM			3200 RPM
Bore	22 mm	22 mm	22 mm
Stroke	16,5 mm	20 mm	20 mm
Weight	9,3 kg	9,3 kg	12 kg

Common specifications

Inlet pressure range	Flooded to 4,1 bar
Crankcase capacity	0,51 L
Maximum liquid temperature	71° C
Inlet ports (2)	1/2" NPTF
Discharge ports (2)	3/8" NPTF
Shaft diameter	20 mm
Dimensions (5CP6180CSS)	277 x 226,5 x 147 mm
Dimensions (5CP6190)	274 x 254 x 147 mm
Dimensions (5CP6190G)	279 x 315 x 162 mm

(*) Abnormalities permitted only after consultation and written confirmation from Cat Pumps.

Exploded View



MODELS
5CP6180CSS, 5CP6190, 5CP6190G1
January 2019

Parts list

It.	Num.	Mat.	Description	Qty
2	30057	STL	Key (M6x6x25)	1
5	126542	STCP R	Screw, HHC sems (M8x16)	8
8	46910	AL	Cover, bearing	2-1
10	14028	NBR	O-ring, bearing cover – 70D	2
11	43222	NBR	Seal, oil, crankshaft – 70D	2-1
15	14480	STL	Bearing, ball	2
20	48742	TNM	Rod, connecting assy {10/01}	3
25	48646	FCM	Crankshaft, dual end M20 - 5CP6190, 5CP6190G1	1
	48368	FCM	Crankshaft, single end M16,5 – 5CP6180CSS	1
30	49776	AL	Cover, bearing – 5CP6180CSS	1
31	127409	-	Cap, vented w/o Ring (Rain Cap)	1
32	46798	-	Cap, oil filler, domed	1
33	14179	NBR	O-ring, oil filler cap – 70D	1
37	92241	-	Gauge, oil, bubble w/gasket – 80D	1-2
38	44428	NBR	Gasket, flat, oil gauge – 80D	1-2
40	125824	STCP R	Screw, HHC sems (M6x16)	4
48	25625	STCP	Plug, drain (1/4"x19BSP)	1
49	23170	NBR	O-ring, drain plug – 70D	1
50	46940	AL	Cover, rear	1
51	14044	NBR	O-ring, rear cover	1
53	48617	AL	Crankcase	1
64	46746	CM	Pin, crosshead	3
65	48647	BBNP	Rod, plunger	3
70	46838	NBR	Seal, oil, crankcase – 70D	3
87	48648	S	Washer, flat (M10x24)	3
90	121391	CC	Plunger (M22x50)	3
98	46730	NBR	Washer, seal – 90D	3
	48394	FPM	Washer, seal – 90D	3
	# 48432	EPDM	Washer, seal	3
99	+ 48201	SS	Retainer, plunger w/stud (M6)	3
100	46749	PVDF	Retainer, seal	3
106	49644	NBR	Seal, LPS w/SS-Spg	3
	49704	FPM	Seal, LPS w/SS-Spg	3
	# 48650	EPDM	Seal, LPS w/SS-Spg	3
	76704	ST	Seal, LPS w/S-Spg	3
120	121394	BB	Case, seal	3
121	13980	NBR	O-ring, seal case – 70D	3
	14330	FPM	O-ring, seal case – 70D	3
	# 49731	EPDM	O-ring, seal case	3
125	121395	SNG	Seal, HPS w/S	3
	122188	STG	Seal, HPS w/S	3
139	22179	BBCP	Plug, inlet (1/2"NPTM)	1
162	43248	PTFE	Back-up-ring, seat	6
163	43249	NBR	O-ring, seat – 80D	6
	44383	FPM	O-ring, seat – 70D	6
	# 46206	EPDM	O-ring, seat – 70D	6
164	44718	S	Seat	6
166	43721	S	Valve	6
167	43751	S	Spring	6
168	44564	PVDF	Retainer, spring	6
172	17617	NBR	O-ring, valve plug – 90D	6
	11691	FPM	O-ring, valve plug – 90D	6
	# 46207	EPDM	O-ring, valve plug – 70D	6

174	125214	BBCP	Plug, valve	6
185	49760	BBCP	Manifold, head	1
188	126513	STCP R	Screw, HSH (M8x70)	8
196	22187	BBCP	<i>Plug, discharge (3/8"NPTM)</i>	1
250	118672	STCP	<i>Protector, shaft</i>	1
255	30243	STZP	<i>Mount, direct</i>	1
260	30611	STZP R	<i>Mount, rail, assy</i>	1
	30637	STZP	<i>Mount, angle assy-retro fit (see TB 078)</i>	1
265	30659	-	<i>Kit, complete mounting (incl 30611,30633,118672) (belt drive only)</i>	1
275	30944	STL	<i>Assembly, Hub & Key (incl 30945, 30057)</i>	1
283	34334	-	<i>Kit, oil drain (3/8"x24") (see individual datasheet)</i>	1
	76334	-	<i>Kit, oil indicator (3/8"x24") (see individual datasheet)</i>	1
299	818460	BBCP	<i>Head, complete w/NBR seals and O-rings</i>	1
300	76620	NBR	<i>Kit, seal (incls: 98,106,121,125) standard</i>	1
	76610	FPM	<i>Kit, seal (incls: 98,106,121,125)</i>	1
	# 76650	EPDM	<i>Kit, seal (incls: 98,106,121,125)</i>	1
	76616	HT	<i>Kit, seal (incls: 98,106,121,125)</i>	1
310	34920	NBR	<i>Kit, valve (incls:,162,163,164,166,167,168,172) standard</i>	2
	31256	FPM	<i>Kit, valve (incls:,162,163,164,166,167,168,172)</i>	2
	# 31253	EPDM	<i>Kit, valve (incls:,162,163,164,166,167,168,172)</i>	2
350	30696	STZP	<i>Pliers, reverse</i>	1
500	8076	-	<i>Gearbox (see individual datasheet)</i>	1

Bold print numbers are unique to a particular pump model. *Italics are optional items.* { } Date of latest production change.
Silicone oil/grease required. + Production parts are different than repair parts. R Components comply with RoHS directive.
View 'Tech Bulletins' 024, 036, 043, 053, 060, 061, 064, 073, 074, 078 and 083 for additional information.

Material codes: (not part or part number)

AL	Aluminum	FPM	Fluorocarbon	ST	Special PTFE
BB	Brass	HT	Hi-Temp (EPDM alternative)	STCP	Steel / chrome plated
BBCP	Brass / chrome plated	NBR	Medium nitrile (Buna-N)	STG	Special blend PTFE white
BBNP	Brass nickel plated	PTFE	Pure polytetrafluoroethylene	STL	Steel
CC	Ceramic	PVDF	Polyvinylidene fluoride	STZP	Steel / zinc plated
CM	Chrome-moly	S	304 stainless steel	TNM	Special high strength
EPDM	Ethylene propylene diene mon.	SNG	Special blend (Buna)		
FCM	Forged chrome-moly	SS	316 stainless steel		